

Theater Technical Information



Tempe Center for the Arts

Tempe Center for the Arts
Theater Technical Information Packet
700 W Rio Salado Pkwy, Tempe, AZ., 85281

Table of Contents

General Information 4

 Technical Services 4

 Programming 4

 Box Office 4

 Rental Contact:..... 4

 Area Hotels..... 5

 Directions 5

Management..... 6

 Production Office 6

 Green Room 6

 Policies 6

Load-In Area 6

 Load-In Access to Stage..... 6

Carpentry 7

 Seating..... 7

 Stage Dimensions..... 7

 Stage Floor 7

 House Draperies (Goods) 9

 Line Set Data 9

 House Line Set Plot 10

Lighting..... 11

 Power: 11

 Control: 11

 Dimmers..... 11

 Circuits..... 11

 Circuit Locations..... 11

Tempe Center for the Arts
Theater Technical Information Packet

700 W Rio Salado Pkwy, Tempe, AZ., 85281

Equipment Inventory	12
House Lighting Plot Description	12
Support Areas.....	12
Audio	13
Power:	13
Control Location.....	13
Hearing Assist System	13
Paging System	14
Production Communication	14
Equipment Inventory	15
Video	15
Projector	15
Projection Screen	15
Video Equipment	15
Props	15
Orchestra Pit	15
Music.....	15
Orchestra Shell:.....	15
Platforms.....	15
Dance Floor:	15
Lecterns.....	15
Wardrobe	16
Dressing Rooms:.....	16
Wardrobe Area:	16

Tempe Center for the Arts Theater Technical Information Packet

700 W Rio Salado Pkwy, Tempe, AZ., 85281

General Information

Programming:

General Manager
Eileen May
P: (480) 350-2881
E: Eileen_may@tempe.gov

Audience Services:

Audience Experience Coordinator
Lucas Cullum
P: (480) 350-2883
E: Lucas_cullum@tempe.gov

Technical Services:

Community Services Supervisor
Production
Kathleen Dooner
P: (480) 350-2877
E: Kathleen_dooner@tempe.gov

Box Office:

Box Office Coordinator
Amy Estes
P: (480) 350-2765
E: Amy_estes@tempe.gov

Production Coordinator
Cody Downing
P: (480) 350-2914
E: Cody_downing@tempe.gov

Marketing:

TCA Marketing Coordinator
Kelly Lovell-Taylor
P: (480) 350-5255
E: Kelly_taylor@tempe.gov

Rental Contact:

Business Development Coordinator
Kim McGoldrick
P: (480) 350-2814
E: Kim_mcgoldrick@tempe.gov

Tempe Center for the Arts
Theater Technical Information Packet
700 W Rio Salado Pkwy, Tempe, AZ., 85281

Area Hotels:

Tempe Mission Palms

60 E 5th St., Tempe, AZ 85281
(480) 894-1400

Hyatt Place Tempe/Phoenix Airport

1413 W Rio Salado Pkwy, Tempe, AZ 85281
(480) 804-9544

Courtyard Marriott Tempe Downtown

601 Ash Ave., Tempe, AZ 85281
(480) 966-2800

SpringHill Suites Phoenix/Tempe /Airport

1601 W Rio Salado Pkwy, Tempe, AZ 85281
(480) 968-8222

AC Hotel Phoenix/Tempe /Downtown

100 E Rio Salado Pkwy, Tempe, AZ 85281
(480) 642-6140

Directions to Tempe Center for the Arts:

From Phoenix (from I10 South or I17 South)

1. Take Loop 202 East.
2. Exit Priest Drive and turn right (south).
3. Turn left (east) on Rio Salado Pkwy and travel a mile.
4. Turn left (north) into drive.
5. Take your first right into employee parking and drive through to loading dock.
6. All performers and crew will park in the garage to the west of the TCA.

From Tucson (I-10 north)

1. Take exit 153A to AZ 143 North.
2. Take Loop 202 East.
3. Exit Priest Drive and turn right (south).
4. Turn left (east) on Rio Salado Pkwy and travel a mile.
5. Turn left (north) into drive.
6. Take your first right into employee parking and drive through to loading dock.
7. All performers and crew will park in the garage to the west of the TCA.

Tempe Center for the Arts
Theater Technical Information Packet
700 W Rio Salado Pkwy, Tempe, AZ., 85281

Management

Production Office:

Location: Loading Dock hallway of Theater.
Internet access via Cat5e Ethernet cable available, shared wireless available.

Green Room:

Location: upstage hallway of Theater next to the Stage Door Office

Policies:

- Lobby is typically open during business hours or 1 hour prior to curtain with house opening 30 minutes prior to curtain.
- The Fire Curtain must not be obstructed in any manner which could prevent its complete contact with the stage floor when deployed.
- All scenery drops and fabric must be flame-proofed. Random testing of articles will occur.
- All wood must be flame-proofed (fire-treated).
- All doors leading onto the stages are fire rated and must not be obstructed in any way to prevent their closure. It is a violation of fire code ordinances, and a potential life safety hazard, to obstruct or prop these doors open.

Load-In Area

Load-In Access to Stage:

- Two loading dock bays at stage level. Semi height with levelers.
- Dock 2 is at street level behind the Gallery and contents must be ramped down. Dock 2 can accommodate one (1) 53' tractor-trailer without tractor attached. Trailer must park elsewhere on campus. Once a truck/trailer has been off-loaded, it must be parked elsewhere as soon as possible, unless special arrangements have been made with TCA staff.
- There is no forklift on site.
- Loading dock door is 12' wide by 18' high.
- Driver must remain to move truck if necessary.
- Post-show storage is NOT available at the Tempe Center for the Arts. All items must be removed at load-out. The Tempe Center for the Arts is not responsible for any items left behind.

Tempe Center for the Arts
Theater Technical Information Packet
700 W Rio Salado Pkwy, Tempe, AZ., 85281

Carpentry

Seating:

House Capacity – 569 with orchestra lift seated; 562 without

Main Floor	Balcony One	Balcony Two
341 Fixed (orchestra pit – 33 seats)	132 Fixed	98 Fixed
14 Wheelchair	12 Wheelchair	12 Wheelchair
8 Loose Chairs	12 Loose Chairs	12 Loose Chairs

NOTE: See attached seating charts

Stage Dimensions:

Proscenium width: 50' with a 40' option

Proscenium height: 29'

SL locking rail to SR wall: 110' 11"

Stage Left wing: 11'W X 46'D

Stage Right wing 33'W X 46'D

Stage Right has a mid-rail (pinned-breasting rail) Gallery 30' above stage floor.

Plaster line to back wall: 46'

Plaster line to last line set (78): 45'

Control room to plaster line: 45'

House mix position to plaster line: 26'

Follow spot booth to center stage: 60'

Gridiron: 75'

Plaster Line to Edge of Orchestra Pit: 7'

Orchestra pit: 44'L x 13'6" W radius design, 594 sq. ft

Variable depth to 10' below stage level

Static load capacity: 80,250 lbs.

Lifting load capacity: 26,750 lbs.

Orchestra shell width at proscenium: 50'

Orchestra shell depth: 40'

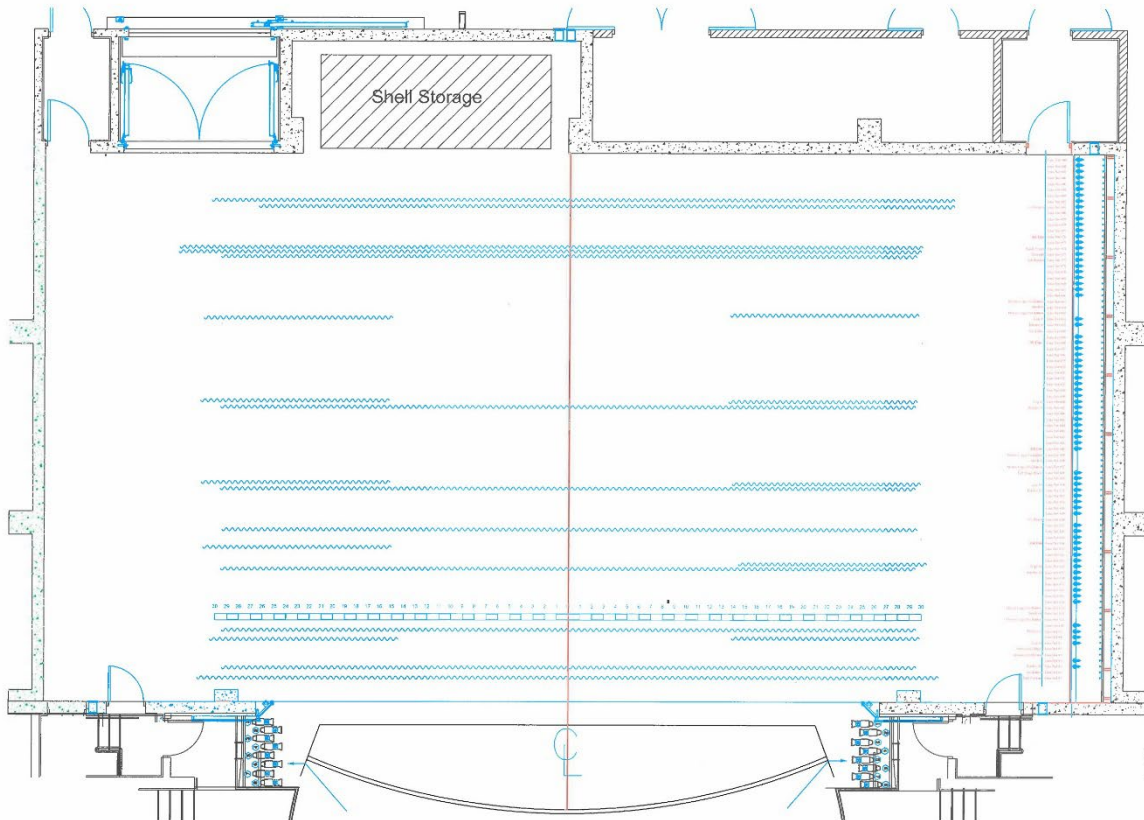
Orchestra shell width at upstage: 40'

Stage Floor

- Resilient: 2 layers of ply with a Masonite skin, painted black.
- Lagging into TCA floors is allowed. All hardware must be Grade 5 or higher and rated for the purpose and approved by TCA staff. Client will be responsible for all costs incurred by the TCA in the repair of the holes.

No Traps are available.

Tempe Center for the Arts
Theater Technical Information Packet
700 W Rio Salado Pkwy, Tempe, AZ., 85281



Tempe Center for the Arts
Theater Technical Information Packet
700 W Rio Salado Pkwy, Tempe, AZ., 85281

House Draperies (Goods):

Drapery	Quantity	Size	Fullness	Fabric	Lining	Color	Notes
Main Border	1	60' x 15'	75% Sewn In	25 oz Velour	Black Ranger	Plum	Nap Up
Main Drape	1	60' x 35'	75% Sewn In	25 oz Velour	Black Ranger	Plum	Nap Up
Border	5	60' x 10'	None	25 oz Velour	None	Black	Nap Down
Leg	10	16' x 32'	None	25 oz Velour	None	Black	Nap Down
Traveler	4	60' x 32'	50% Tied In	25 oz Velour	None	Black	Nap Down
Cyclorama	1	50' x 30'	None	Leno	None	White	Seamless
Black Scrim	1	60' x 30'	None	Sharktooth	None	Black	
Proj Screen	1	60' x 32'	None	Rear Proj	None	Grey	Seamless
Tabs	6	12' x 30'	None	25 oz Velour	None	Black	Nap Down

Line Set Data:

Working height of battens:

- High trim: 75'
- Low trim: 3' 6"

Battens: 89 truss battens, 60' long, Schedule 40

Type: Single Purchase

Arbor Capacity: 1600 pounds per arbor

Available Weight: Located USL, mid-rail and loading rails

Loading Galleries: 2 located SL at 35' and 70' above stage floor

Lock Rail: Located stage left at stage level

Tempe Center for the Arts
Theater Technical Information Packet
700 W Rio Salado Pkwy, Tempe, AZ., 85281

House Line Set Plot:

Dist US	LS	House Hang (9/2013)	Size	Notes
1'2"	#1	Main Curtain (motorized)	63'w x 34'h	Deep Purple
2'3"	#2	No Batten		
2'9"	#3	1st Border, 15'	59'w x 15'h	
3'3"	#4			
3'9"	#5	1st Electric (motorized)		
4'3"	#6	No Batten		
4'9"	#7	1st Legs	16.5'w x 32'h	20' off center
5'3"	#8			
5'9"	#9	RP Screen		
6'3"	#10			
6'9"	#11	No Batten		
7'3"	#12	Shell #1 (motorized)		
7'9"	#13	No Batten		
10'9"	#19	2nd Border	59'w x 10'h	
11'3"	#20	2nd Legs	16.5'w x 32'h	20' off center
11'9"	#21			
12'3"	#22			
12'9"	#23			
13'3"	#24	House 2nd Electric		Subject to change
15'3"	#28	No Batten		
17'9"	#33	3rd Border	59'w x 10'h	
18'3"	#34	3rd Legs	16.5'w x 32'h	20' off center
18'9"	#35			
19'3"	#36	Traveler	51'w x 22'h	
19'9"	#37	No Batten		
20'3"	#38	Shell #2 (motorized)		
20'9"	#39	No Batten		
21'3"	#40	House 3rd Electric		Subject to change
21'9"	#41			
24'9"	#47	4th Border	59'w x 10'h	
25'3"	#48	4th Legs	16.5'w x 32'h	20' off center
29'9"	#57			
30'3"	#58	House 4th Electric		Subject to change
30'9"	#59			
31'3"	#60	No Batten		
31'9"	#61	5th Border	59'w x 10'h	
32'3"	#62	5th Legs	16.5'w x 32'h	20' off center
32'9"	#63	No Batten		
33'3"	#64	Shell #3 (motorized)		
33'9"	#65	No Batten		
37'3"	#72	6th Border	59'w x 10'h	
37'9"	#73	Traveler	63'w x 32'h	
38'3"	#74	Black Scrim	59'w x 29'h	Black Skarkstooth
38'9"	#75			
39'3"	#76	House 5th Electric		Cyc Electric
41'9"	#81	Cyclorama	50'w x 29'h	White Filled Leno Scrim

Tempe Center for the Arts
Theater Technical Information Packet
 700 W Rio Salado Pkwy, Tempe, AZ., 85281

Lighting

Power:

Quantity	Voltage	Phase	Amperage	Location	Connection
1	120/208	3 Phase	400a	Stage Right Wall	Cam
1	120/208	3 Phase	200a	Stage Right Wall Bridge	Cam
1	120/208	3 Phase	400a	Loading Dock	Cam
1	120/208	3 Phase	200a	Loading Dock	Cam

Control:

- ETCNET 3 throughout venue
- ETC Gio Console
- ETC Net 3 radio focus remote

Dimmers:

- 450 ETC sensor dimmers, 2.4kW dimmer

Circuits:

- 450 – 2.4kW circuits. Fixed positions on stage right and stage left catwalks with Socopex multicable connections. See Attachment for specific location.

Circuit Locations:

Location	Dimmers
1 st E (Raceway HL -> HR)	185-224
House Catwalk (A) (Raceway HL -> HR)	351-381
House Catwalk (B) (Raceway HL -> HR)	382-430
Cloud	339-344
Mezzanine Rail (HL -> HR)	83-85, 86-88, 89-91, 92-94, 95-97, 98-100, 101-103
Balcony Rail (HL -> HR)	104-106, 107-109, 110-112, 113-115, 116-118, 119-121, 122-124
House Right Upper Ladder	57-62
House Right Lower Ladder	63-68
House Left Upper Ladder	45-50
House Left Lower Ladder	51-56
Orchestra Pit	1-8
Grid (Up Stage Center)	245-250
Stage Right Gallery DS -> US	225-248, 249-272, 273-296, 297-320 155-160, 161-166, 167-172, 173-178, 179-184, 321-338
Stage Left Gallery DS -> US	125-130, 131-136, 137-142, 143-148, 149-154
Down Stage Right Wall (Stage level)	39-44
Down Stage Left Wall (Stage level)	9-14 15-20 21-26
Up Stage Right Wall (Stage level)	27-32 33-38
Up Stage Left Wall (Stage level Shell storage)	15-26

Tempe Center for the Arts Theater Technical Information Packet

700 W Rio Salado Pkwy, Tempe, AZ., 85281

Equipment Inventory:

Stage Instruments:

Quantity	Brand	Type	Wattage
5	ETC Source 4	5 Degree	575wt
15	ETC Source 4	10 Degree	575wt
40	ETC Source 4	19 Degree	575wt
68	ETC Source 4	26 Degree	575wt
60	ETC Source 4	36 Degree	575wt
10	ETC Source 4	50 Degree	575wt
40	ETC Source 4	Par	575wt
16	FC1	4 Cell Cyc	1kw

Followspots:

2 Super Trooper (2K) follow spots located in enclosed spot booth at rear of house - catwalk level

Cable:

Soco, Stage pin and 2-fers are available

House Lighting Plot Description

- The Theater house lighting plot is capable of up to 3 different color washes on stage.
- Two high side wash is available from the 1st, 2nd, 3rd and 4th electrics over stage.
- The house plot includes overhead special fixtures on each electric.
- Up to 4 color Cyclorama wash is also available as well.
- **NOTE: Not all fixtures may be available because they are in use in house plot**
- **NOTE: See attached plot and paperwork**

Support Areas:

Crossover:

There is no dedicated crossover on stage. There is 3' behind the CYC or the upstage hallway with access to SR and SL.

Access:

From Front of House: Hallway stage left (house right) to upstage hallway.

From Dressing Rooms: Dressing rooms are located in the upstage hallway.

Storage:

There is no dedicated storage space for events. Clients may store equipment in loading dock, in designated areas, during their stay. Storage is not available before or after load-in of show. All items must leave at load-out.

Crew Room:

Available for incoming crew and is shared with the house crew and other employees.

Tempe Center for the Arts Theater Technical Information Packet

700 W Rio Salado Pkwy, Tempe, AZ., 85281

Audio

Power:

Quantity	Voltage	Phase	Amperage	Location	Connection
1	120/208	3 Phase	200a	Stage Right Wall	Cam
1	120/208	3 Phase	200a	Loading Dock	Cam

Control Location:

The Front of House mix position is located in the center of the main floor in the house, 25' from plaster line. Mix position cable tunnel terminates Down Stage Right and Left. A 100' snake minimum is recommended to connect a Monitor Console Down Stage Right to a console at the Front of House mix position. There is a split Down Stage Left in lieu of snake in order to expedite monitor mixer connection

- If you would like the monitor console to be placed Down Stage Left, a 10 ft snake to the split is needed.
- If you need to run lines to the follow spot booth, a 350' snake will be needed.

Hearing Assist System:

Infrared hearing assist system headsets are available to patrons via the house management staff. Show Program is distributed by the audio system Digital Signal Processor and sourced from the mixing console or ambient room mic.

Paging System:

Paging system is routed to the US hallway dressing rooms, Green Room, production office and hallway restrooms. Paging locations are located DSR and in the lighting control booth.

Front of House video monitoring is available for the Green Room.

Production Communication:

2 channel Clear-Com party line system w/6 single-channel wired belt packs and headsets.

Equipment Inventory:

Front of House mixing console:

- Yamaha CL5
 - 72 inputs
 - 8 analog outputs
 - 8 additional analog line level inputs and outputs located at Front of House Mix Position
 - 3 DSP mix engines

Tempe Center for the Arts
Theater Technical Information Packet
 700 W Rio Salado Pkwy, Tempe, AZ., 85281

FOH Playback:

- 1 Tascam CD-500 CD Player/Recorder
- 1 Tascam CD-222 CD Player/Recorder

Monitor Package Equipment (subject to availability and additional rental costs):

- Soundcraft MH4
- 2 EAW SM129 12"
- 2 EAW SM159 15"
- 4 Yamaha 400
- 2 Community SBS45 Subs

Speaker systems:

Renkus-Heinz P.A. package

- Left, Center, Right Clusters, Flown
 - 6 Renkus-Heinz STX 9
- Front Fill
 - 7 Renkus-Heinz TRX 61 built into front of stage,
 - 7 Renkus-Heinz TRX 61 built into front of orchestra pit

Facility shared wireless microphones (based on availability, additional charges applicable):

Microphones:

#	Make/Model	Type	#	Make/Model	Type
4	Shure SM58	Cardioid dynamic vocal	8	Shure ULX	Wireless Microphones Lav or Handheld

(*Note: -additional miscellaneous microphones are available depending on use and limited supply in our microphone inventory.)

Tempe Center for the Arts
Theater Technical Information Packet
700 W Rio Salado Pkwy, Tempe, AZ., 85281

Video

Projector: (Shared with Theater)

- Christie Roadster HD18K 1080 HD DLP Projector. Located in Lighting control booth.
 - Inputs: DVI/HDMI, HDSDI, VGA, RGBHV
- Canon SX7 projector with pipe mount
 - Inputs: DVI, VGA, RGBHV
- ATEM Mini Blackmagic Design Switcher
- Focusrite Scarlett 6/8 Audio Interface
- 100 ft. HDMI cable
- 2 - 50' HDMI cables

Projection Screen:

- 20' H x 35' W Filled Leno Scrim (cyc hangs at the back wall of stage.)

Props

Orchestra Pit

- Orchestra pit is (57L x 12W radius design) 530 sq. ft. – variable depth to 10' below stage level.
- Static load capacity: 80,250 lbs. Lifting load capacity: 26,750 lbs.
- Orchestra Shell width at Proscenium: 53' 8".

Music:

- **Chairs:** 200 Wenger black chairs (subject to availability)
- **Music Stands:** 200 Wenger music stands (subject to availability)
- **Stand Lights:** 200 stand lights (subject to availability)
- **Conductor Podium:** Wenger 2-step podium with conductor music stand (subject to availability)

Orchestra Shell:

- Oak veneer, Wenger Diva orchestra shell. See attachment for stage setup and storage locations.

Platforms:

- 12 SteelDeck 4'x8' platforms (subject to availability)
- 10 SteelDeck 3'3"x 6'6" platforms (subject to availability)
- Legs to raise platforms to 8", 16" and 24" heights

Dance Floor:

- 6 sections of Harlequin dance floor: 6' x 60'

Lecterns:

- 2 black podiums (subject to availability)
- 1 silver podium

Tempe Center for the Arts

Theater Technical Information Packet

700 W Rio Salado Pkwy, Tempe, AZ., 85281

Wardrobe

Dressing Rooms:

- 1-Star dressing room with shower and bathroom, located in the US hallway.
- 4 dressing rooms (4-person capacity) with shower and bathroom, located in the US hallway.
- 2 chorus dressing rooms (8-10-person capacity) with showers and bathroom, located in the US hallway.

Wardrobe Area:

- Main laundry facility is located in the loading dock
- 1 clothes rack is located in each dressing room. 1 more rack may be available in wardrobe room (based on availability)
- 1 iron and 1 ironing boards (based on availability)
- 1 steamer (based on availability)
- 2 GE washing machines (based on availability)
- 2 GE dryers (based on availability)