

Studio Technical Information



Tempe Center for the Arts

Tempe Center for the Arts
Theater Technical Information Packet
700 W Rio Salado Pkwy, Tempe, AZ., 85281

Table of Contents

General Information 4

 Technical Services 4

 Programming 4

 Box Office 4

 Rental Contact:..... 4

 Area Hotels..... 5

Management..... 6

 Production Office 6

 Green Room 6

 Policies 6

Load-In Area 6

 Load-In Access to Stage..... 6

 Directions 6

Carpentry 7

 Seating..... 7

 Stage Dimensions..... 7

 Stage Floor 7

 House Draperies (Goods) 9

Lighting..... 9

 Power: 9

 Control: 9

 Dimmers..... 9

 Circuits..... 9

 Circuit Locations..... 10

 Equipment Inventory 11

 House Lighting Plot Description 11

Tempe Center for the Arts
Theater Technical Information Packet

700 W Rio Salado Pkwy, Tempe, AZ., 85281

Support Areas..... 12

Audio 11

 Power: 11

 Control Location..... 11

 Hearing Assist System 11

 Paging System 11

 Production Communication 11

 Equipment Inventory 12

Video 13

 Projector 13

 Projection Screen 13

Props 13

 Music..... 13

 Platforms..... 13

 Dance Floor: 13

 Lecterns..... 13

Wardrobe 13

 Dressing Rooms:..... 13

 Wardrobe Area: 14

Tempe Center for the Arts Theater Technical Information Packet

700 W Rio Salado Pkwy, Tempe, AZ., 85281

General Information

Programming:

General Manager
Eileen May
P: (480) 350-2881
E: Eileen_may@tempe.gov

Audience Services:

Audience Experience Coordinator
Lucas Cullum
P: (480) 350-2883
E: Lucas_cullum@tempe.gov

Technical Services:

Community Services Supervisor
Production
Kathleen Dooner
P: (480) 350-2877
E: Kathleen_dooner@tempe.gov

Box Office:

Box Office Manager
Amy Estes
P: (480) 350-2823
E: Amy_Estes@tempe.gov

Production Coordinator

Cody Downing
P: (480) 350-2914
E: Cody_downing@tempe.gov

Marketing:

TCA Marketing Coordinator
Kelly Lovell-Taylor
P: (480) 350-5255
E: Kelly_taylor@tempe.gov

Rental Contact:

Business Development Coordinator
Kim McGoldrick
P: (480) 350-2814
E: Kim_mcgoldrick@tempe.gov

Tempe Center for the Arts
Theater Technical Information Packet
700 W Rio Salado Pkwy, Tempe, AZ., 85281

Area Hotels:

Tempe Mission Palms

60 E 5th St., Tempe, AZ 85281
(480) 894-1400

Hyatt Place Tempe/Phoenix Airport

1413 W Rio Salado Pkwy, Tempe, AZ 85281
(480) 804-9544

Courtyard Marriott Tempe Downtown

601 Ash Ave., Tempe, AZ 85281
(480) 966-2800

SpringHill Suites Phoenix/Tempe /Airport

1601 W Rio Salado Pkwy, Tempe, AZ 85281
(480) 968-8222

AC Hotel Phoenix/Tempe /Downtown

100 E Rio Salado Pkwy, Tempe, AZ 85281
(480) 642-6140

Directions to Tempe Center for the Arts:

From Phoenix (from I10 South or I17 South)

1. Take Loop 202 East.
2. Exit Priest Drive and turn right (south).
3. Turn left (east) on Rio Salado Pkwy and travel a mile.
4. Turn left (north) into drive.
5. Take your first right into employee parking and drive through to loading dock.
6. All performers and crew will park in the garage to the west of the TCA.

From Tucson (I-10 north)

1. Take exit 153A to AZ 143 North.
2. Take Loop 202 East.
3. Exit Priest Drive and turn right (south).
4. Turn left (east) on Rio Salado Pkwy and travel a mile.
5. Turn left (north) into drive.
6. Take your first right into employee parking and drive through to loading dock.
7. All performers and crew will park in the garage to the west of the TCA.

Tempe Center for the Arts
Theater Technical Information Packet
700 W Rio Salado Pkwy, Tempe, AZ., 85281

Management

Production Office:

Location: upstage hallway of Studio
Internet access via Cat5 ethernet cable available, shared wireless available.

Green Room:

Location: upstage hallway of Studio (doubles as the Production Office)

Policies:

- Lobby is typically open during business hours or 1 hour prior to curtain with house opening 30 minutes prior to curtain.
- The Fire Curtain must not be obstructed in any manner which could prevent its complete contact with the stage floor when deployed.
- All scenery drops and fabric must be flame proofed. Random testing of articles will occur.
- All wood must be flame-proofed (fire-treated).
- All doors in the facility are fire rated and must not be obstructed in any way to prevent their closure.

Load-In Area

Load-In Access to Stage:

- Two loading dock bays at stage level. Semi height with levelers.
- Dock 2 is at street level behind the Gallery and contents must be ramped down. Dock 2 can accommodate one (1) 53' tractor-trailer without tractor attached. Trailer must park elsewhere on campus. Once a truck/trailer has been off-loaded, it must be parked elsewhere as soon as possible, unless special arrangements have been made with TCA staff.
- There is no forklift on site.
- Loading dock door is 12' wide by 18' high.
- Driver must remain to move truck if necessary.
- Post-show storage is NOT available at the Tempe Center for the Arts. All items must be removed at load-out. The Tempe Center for the Arts is not responsible for any items left behind.

Tempe Center for the Arts
Theater Technical Information Packet
700 W Rio Salado Pkwy, Tempe, AZ., 85281

Carpentry

Seating:

House Capacity – 220 with Balcony (End Stage configuration) Standard Configuration.
200 with Balcony (Thrust Configuration)
211 with Balcony (Arena Configuration)

Orchestra Section	Balcony
168 Seats (varies w/config)	36
16 Box (8 either side SL-SR)	8 Wheelchair

NOTE: See attached seating charts for all configurations

Stage Dimensions:

End Stage specifications:

Audience to back wall 33'
Wall to wall w/o draperies 51.5'
Floor to catwalks 22'

Thrust specifications:

Audience to back wall 48'
Side audience to audience 20-51.5'
Floor to catwalks 22'

Arena specifications:

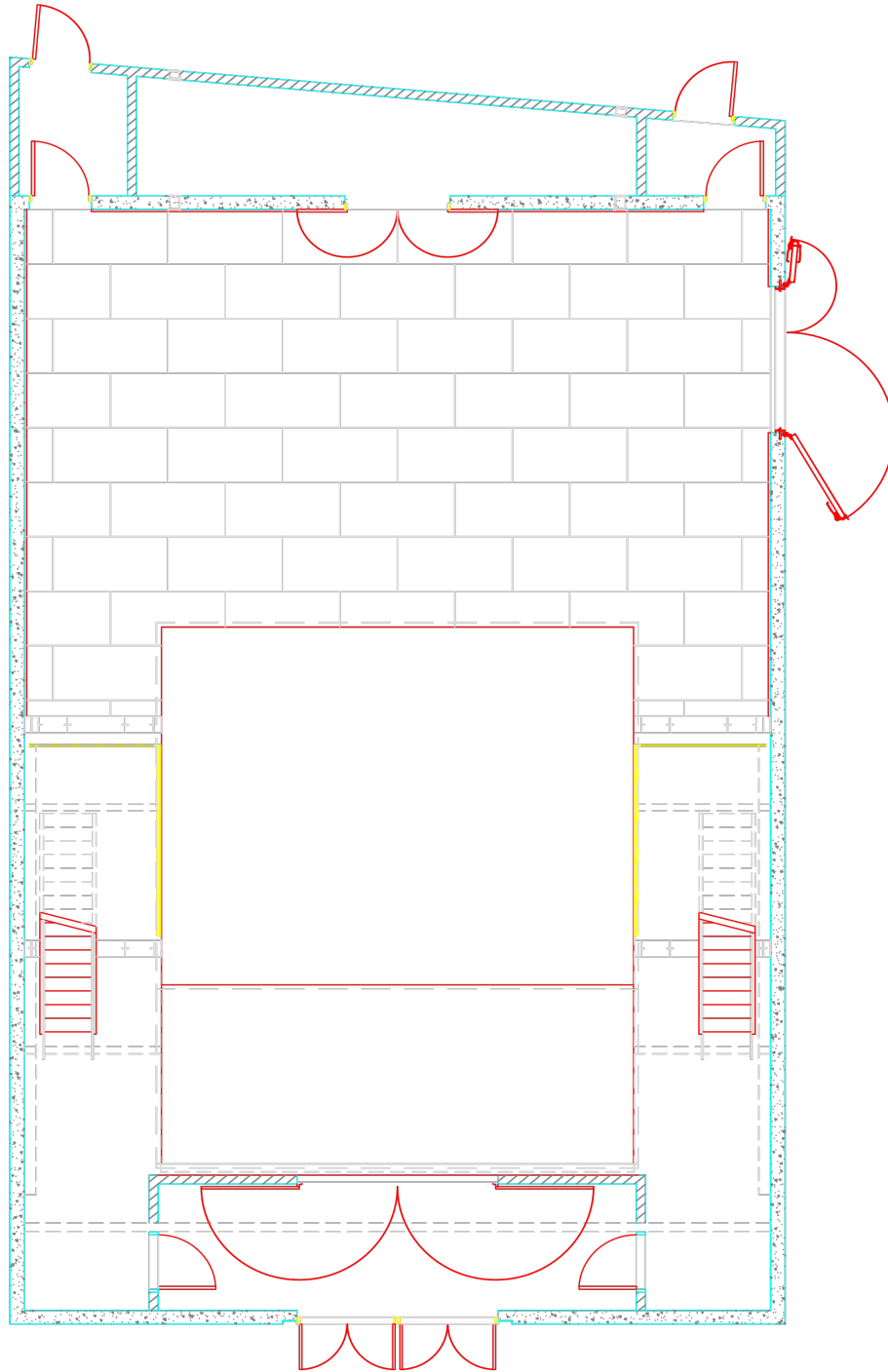
Playing space 19.5' x 19.5'
Floor to catwalks 22'

Stage Floor

- Resilient: 2 layers of ply with a Masonite skin, painted black and Nivo flex adjustable platforms.
- Lagging into TCA floors is allowed, but all hardware must be Grade 5 or higher and rated for the purpose and approved by TCA staff. Client will be responsible for all costs incurred to the TCA in the repair of the holes.

No Traps are available.

Tempe Center for the Arts
Theater Technical Information Packet
700 W Rio Salado Pkwy, Tempe, AZ., 85281



Tempe Center for the Arts
Theater Technical Information Packet
 700 W Rio Salado Pkwy, Tempe, AZ., 85281

House Draperies (Goods):

Drapery	Quantity	Size	Fullness	Fabric	Lining	Color	Notes
Border	1	51' x 5'	75% Sewn In	25 oz Velour	None	Black	Nap down
Border	1	51' x 9'	None	25 oz Velour	None	Black	Nap Down
Leg	8	12' x 19'	None	25 oz Velour	None	Black	Nap Down
Cyclorama	1	51' x 19'	None	Leno	None	White	Seamless
Black Scrim	1	51' x 19'	None	Sharktooth	None	Black	Seamless
Tabs	4	16' 6" x 22'	None	25 oz Velour	None	Black	Nap Down

Lighting

Power:

Quantity	Voltage	Phase	Amperage	Location	Connection
1	120/208	3 Phase	400a	On Catwalk	Cam
1	120/208	3 Phase	200a	Storage Closet Up-C	Cam
1	120/208	3 Phase	400a	Loading Dock	Cam
1	120/208	3 Phase	200a	Loading Dock	Cam

Control:

- ETCNET 3 throughout venue
- ETC Gio Console
- ETC Net 3 radio focus remote

Dimmers:

- 240 ETC sensor dimmers, 2.4kW dimmer

Circuits:

- 240 – 2.4kW circuits. Fixed positions on up-stage right and stage left and catwalks with Socopex multicable connections. See Attachment for specific location.

Tempe Center for the Arts
Theater Technical Information Packet
 700 W Rio Salado Pkwy, Tempe, AZ., 85281

Circuit Locations:

Location	Dimmers
House Catwalk (A)	85-96
House Catwalk (B)	97-108
House Catwalk (C)	109-120
House Catwalk (D)	121-132
House Catwalk (E)	133-144
House Catwalk (F)	145-156
House Catwalk (G)	157-168
House Catwalk (H)	169-180
House Catwalk (I)	181-192
House Catwalk (J)	193-204
House Catwalk (K)	205-216
House Catwalk (HL)	223-228, 235-240
House Catwalk (HR)	217-222, 229-23
DSL	16-22
USL	23-33
USR	34-45
DSR	46-51

Equipment Inventory:

Stage Instruments:

Quantity	Brand	Type	Wattage
10	ETC Source 4	19 Degree	575wt
26	ETC Source 4	26 Degree	575wt
58	ETC Source 4	36 Degree	575wt
38	ETC Source 4	50 Degree	575wt
32	ETC Source 4	Par	575wt
10	FC1	4 Cell Cyc	1k

Follow spots:

May use source 4 With a handle on boom in booth - catwalk level

Cable:

Soco, Stage pin and 2-fers are available

Tempe Center for the Arts

Theater Technical Information Packet

700 W Rio Salado Pkwy, Tempe, AZ., 85281

House Lighting Plot Description

- The Theater house lighting plot is capable of up to 3 different color washes on stage.
- A Two-color high side wash is available from the 1st, 2nd, 3rd and 4th electrics over stage.
- Several fixtures are also available on each electric for overhead specials.
- Up to 4 color Cyclorama wash is also available as well.
- **NOTE: Not all fixtures may be available because they are being used on house plot**
- **NOTE: See Attached Plot and Paperwork**

Support Areas:

Crossover:

There is no dedicated crossover. There is 3' behind the CYC or the upstage hallway with access to SR and SL.

Access:

From front of house: Hallway stage left (house right) to upstage hallway.

From dressing rooms: Dressing rooms are located in the upstage hallway.

Storage:

There is no dedicated storage space for events. Clients may store equipment in loading dock, in designated areas, during their stay. Storage is not available before or after load-in of show. All items must leave at load-out.

Crew Room:

Available for incoming crew and is shared with the house crew and other employees

Audio

Power:

Quantity	Voltage	Phase	Amperage	Location	Connection
1	120/208	3 Phase	200a	Stage Right Wall	Cam
1	120/208	3 Phase	200a	Loading Dock	Cam

Control Location:

The Front of House mix position is located on the stage right side of the balcony. With permission, the console can be placed in the booth at the top of the theater (access from catwalks).

Hearing Assist System:

Infrared hearing assist system headsets are available to patrons via the house management staff. Show Program is distributed by the audio system Digital Signal Processor and sourced from the mixing console or ambient room mic.

Paging System:

Paging system is routed to the US hallway dressing rooms, Green Room, production office and hallway restrooms.

Paging location is in the lighting control booth.

Front of House video monitoring is available for the Green Room.

Tempe Center for the Arts
Theater Technical Information Packet
700 W Rio Salado Pkwy, Tempe, AZ., 85281

Production Communication:

2 channel Clear-Com party line system w/4 single-channel wired belt packs and headsets.

Equipment Inventory:

Front of House mixing console:

- Yamaha QL1
 - 32 inputs

FOH Playback:

- 1 Tascam CD-500 CD Player/Recorder
- 1 Tascam CD-222 CD Player/Recorder

Monitor Package Equipment (subject to availability and additional rental costs):

- Soundcraft
- 2 EAW SM129 12"
- 4 Yamaha 400 (when available)

Speaker systems:

- **Frazier P.A. package**
 - Main speakers: 6 Frazier Cat 499 (ceiling mounted)

Facility shared wireless microphones (based on availability, additional Charges applicable):

Microphones:

#	Make/Model	Type	#	Make/Model	Type
4	Shure SM58	Cardioid dynamic vocal	8	Shure ULX	Wireless Microphones Lav or Handheld

(*note-additional miscellaneous microphones are available depending on use and limited supply in our microphone inventory)

Tempe Center for the Arts
Theater Technical Information Packet
700 W Rio Salado Pkwy, Tempe, AZ., 85281

Video

Projector: (Shared with Theater)

- Christie Roadster HD18K 1080 HD DLP Projector. Located in Lighting control booth.
 - Inputs: DVI/HDMI, HDSDI, VGA, RGBHV
- Canon SX7 projector with pipe mount
 - Inputs: DVI, VGA, RGBHV
- ATEM Mini Blackmagic Design Switcher
- Focusrite Scarlett 6/8 Audio Interface
- 100 ft. HDMI cable
- 2 - 50' HDMI cables

Projection Screen:

- 20' H x 35' W Filled Leno Scrim (cyc hangs at the back wall of stage.)

Props

Music:

- **Chairs:** 200 Wenger black chairs (subject to availability)
- **Music Stands:** 200 Wenger music stands (subject to availability)
- **Stand Lights:** 200 stand lights (subject to availability)
- **Conductor Podium:** Wenger 2-step podium with conductor music stand (subject to availability)

Platforms:

- 12 SteelDeck 4'x8' platforms (subject to availability)
- 10 SteelDeck 3'3"x 6'6" platforms (subject to availability)
- Legs to raise platforms to 8", 16" and 24" heights

Dance Floor:

- 5 sections of Harlequin dance floor: 6' x 45'

Lecterns:

- 2 black podiums (subject to availability)
- 1 silver podium

Tempe Center for the Arts
Theater Technical Information Packet
700 W Rio Salado Pkwy, Tempe, AZ., 85281

Wardrobe

Dressing Rooms:

- 2 chorus dressing rooms (10-person capacity) with showers and bathroom, located in the US hallway.

Wardrobe Area:

- Main laundry facility is located in the Loading Dock
- 2 clothes rack is located in each dressing room. 1 more rack may be available in wardrobe room (based on availability)
- 1 iron and 1 ironing boards (based on availability)
- 1 steamer (based on availability)
- 2 GE washing machines (based on availability)
- 2 GE dryers (based on availability)