



PUBLIC MEETING AGENDA

Transportation Commission

MEETING DATE

Tuesday, September 12, 2023 from 7:30 to 9 a.m.

MEETING LOCATIONS

WebEx

<https://tempe.webex.com/tempe/j.php?MTID=m5321b17c97b3e80cd8a28a9553f7db90>

Join by phone +1-408-418-9388 United States Toll

Access code: 2490 533 2087

Webinar password: yqCnD2CqV77 (97263227 from phones and video systems)

AND

In Person

Tempe Transportation Center
Don Cassano Community Room
200 E. Fifth Street, 2nd floor
Tempe, Arizona, 85281

AGENDA ITEM	PRESENTER	ACTION or INFORMATION
1. Public Appearances The Transportation Commission welcomes public comment for items listed on this agenda. There is a three-minute time limit per citizen.	Amanda Nelson, Commission Chair	Information
2. Approval of Meeting Minutes The Commission will be asked to review and approve meeting minutes from the August 8, 2023 meeting.	Amanda Nelson, Commission Chair	Action
3. Mill Avenue Streetscape Project Staff will provide the Commission with design alternatives for the Mill Avenue Streetscape Project and request their input.	Shelly Seyler, Engineering and Transportation Department, Eric Iwersen, Sustainability & Resilience Department, J2 Consulting	Action
4. Equity Study- Making Space Staff will present the draft StoryMaps for Making Space: An Equity Study for Tempe Parks and Recreation, focusing on recommendations for pathways, trails, and transportation connectivity.	Julie Hietter and Erin Kirkpatrick, Community Services Department	Information
5. Grade Separated Crossing at CCW & UPRR Project Staff will provide an update on the Grade Separated	Chase Walman, Engineering & Transportation Department	Information

Crossing at CCW & UPRR Project.		
6. Kyrene/Roosevelt/Farmer Bike Ped Project Staff will make a presentation on the status of the Kyrene/Roosevelt/Farmer Bike Ped Project.	Lyle Begiebing, Engineering & Transportation Department	Information
7. Department & Regional Transportation Updates Staff and commission members will provide information on relevant meetings and events.	Engineering & Transportation Department Staff and Transportation Commissioners	Information
8. Future Agenda Items Commission may request future agenda items.	Amanda Nelson, Commission Chair	Information

According to the Arizona Open Meeting Law, the Transportation Commission may only discuss matters listed on the agenda. The city of Tempe endeavors to make all public meetings accessible to persons with disabilities. With 48 hours advance notice, special assistance is available at public meetings for sight and/or hearing-impaired persons. Please call 350-4311 (voice) or for Relay Users: 711 to request an accommodation to participate in a public meeting.



Minutes City of Tempe Meeting of the Transportation Commission August 8, 2023

Minutes of the meeting of Tempe Transportation Commission held on Tuesday, August 8, 2023 at 7:30 a.m. via Cisco Webex and at the Tempe Transportation Center located at 200 E. Fifth Street, Tempe AZ 85281.

(MEMBERS) Present:

Stevie Milne
Dawn Hocking
Amanda Nelson
Robert Miller
Paul Hubbell
James Dwyer

Pam Goronkin
Brian Fellows
David King
David Sokolowski
Peter Schelstraete
Bobbie Cassano

(MEMBERS) Absent:

Susan Conklu
Alana Chavez Langdon
JC Porter

City Staff Present:

Shelly Seyler, Interim Engineering & Transportation Director
Sue Taaffe, Senior Management Assistant
Cathy Hollow, City Traffic Engineer
Shauna Warner, Neighborhood Program Manager
Julian Dresang, Deputy Engineering & Transportation Director
Eric Iwersen, Sustainability and Resilience Director
Isaac Chavira, Interim Deputy Engineering & Transportation Director
Jeff Tamulevich, Community Development Director

Bonnie Richardson, Principal Planner
Sam Stevenson, Interim Transit Manager
Chase Walman, Principal Planner
Abel Gunn, Transportation Financial Analyst
Lyle Begiebing, Transportation Planner
Lindsay Post, Senior Transportation Planner
Mayen Akpan, Neighborhood Services Specialist
Drew Yokom, Code Enforcement Manager

Guests Present:

John Federico

Commission Chair Amanda Nelson called the meeting to order at 7:31 a.m.

Agenda Item 1 – Public Appearances

None

Agenda Item 2 – Minutes

Amanda Nelson introduced the minutes of the June 13, 2023 meeting of the Transportation Commission and asked for a motion for approval.

Motion: Commissioner Dawn Hocking

Second: Commissioner Pam Goronkin

Decision: Approved by Commissioners

Stevie Milne
Dawn Hocking
Amanda Nelson
Robert Miller
Paul Hubbell
James Dwyer

Pam Goronkin
Brian Fellows
David King
David Sokolowski
Peter Schelstraete
Bobbie Cassano

Agenda Item 3 – Crime Prevention Through Environmental Design (CPTED)

Jeff Tamulevich and Drew Yokom discussed the city's efforts to incorporate crime prevention tactics in development projects. Topics included:

- Background
- Process
- Education and outreach

Discussion included examples of program, new development opportunities, crime prevention and parks.

Agenda Item 4 – Update on Traffic Signal Yellow Clearance Intervals

Cathy Hollow presented information regarding the programming of yellow traffic signal lights. Topics included:

- Overview
- Yellow change interval
- Dilemma zone
- Tempe calculations
- Other city comparisons
- All red clearance
- Phoenix testing
- Next steps

Discussion included the formula for calculating Tempe's yellow clearance intervals and Phoenix's study including locations.

Agenda Item 4 – Upcoming Transportation Public Meetings & Announcements

Shelly Seyler announced that Eric Iwersen is the new Sustainability & Resilience Director. As such, Sam Stevenson will continue to be the Interim Transit Manager and Isaac Chavira will be the Interim Deputy Engineering and Transportation Director.

Agenda Item 5 – Future Agenda Items

Brian Fellows requested another presentation about Crime Prevention Through Environmental Design (CPTED) and James Dwyer requested a presentation about scooter corrals in downtown including results of compliance. Robert Miller requested that a presentation about the number of available public parking spaces in downtown with another Commissioner suggesting having ADA parking information in the presentation.

The following future agenda items have been previously identified by the Commission or staff:

- October 10
 - Annual Report
 - Alameda Drive Streetscape Project (before and after)
 - Eight Street Bike Ped Project

- TMA/TDM, Personal Delivery Devices
- CIP Updates
- November 14
 1. Annual Report
 2. Roundabouts – data on existing and future plans
 3. Western Canal (48th Street to I-10)
 4. College and University Underpass Project
 5. Commission Business
- December 12
- January 9
 1. Commission Business
 2. Traffic Bureau Update
 3. Transportation Master Plan & Transportation Equity
 4. All Pedestrian Phase Signal Mill Avenue and Fifth Street
 5. SATV Corral Parking Update
- February 13
 1. CIP Updates
 2. Prop 400 E
 3. Crime Prevention Through Environmental Design (CPTED) Program Overview
 4. Amount of Public Parking & ADA available in Downtown
- March 12
- April 9
 1. Bike Hero
- May 14
- June 11
 1. CIP Updates
- July 9
- TBD: Streetcar Fare Implementation

The next meeting is scheduled for September 12, 2023. The meeting was adjourned 8:10 a.m.

Prepared by: Sue Taaffe

Reviewed by: Isaac Chavira

MEMORANDUM



TO: Transportation Commission

FROM: Shelly Seyler, Interim Engineering and Transportation Director
Eric Iwersen, Sustainability and Resilience Director

DATE: 9/12/2023

SUBJECT: Mill Avenue Streetscape (University Drive to Rio Salado Parkway)

PURPOSE:

To provide the Commission with an update on the downtown Mill Avenue Streetscape Project (University Drive to Rio Salado Parkway). The project continues to develop clear options for sidewalk and landscaping, coordinating with multiple departments/teams and outside agencies and partners.

CITY COUNCIL STRATEGIC PRIORITY AND RELATED PERFORMANCE MEASURE:

- 1.05 – Feeling of Safety in Your Neighborhood
- 3.14 – ADA Transition Plan
- 3.26 – 20 Minute City
- 4.11 – Tree Coverage
- 5.03 – Capital Investment

BACKGROUND INFORMATION:

The project launched in 2022 to develop a guiding concept. In recent months, more intense refinement of streetscape options have been developed with the consultant team, J2, and a project team. Staff continues to coordinate the project with other adjacent projects like the Fifth Street Project, downtown public restrooms, major special events and the streetcar to ensure design and function compatibility. Staff coordination includes collaboration with other Tempe staff teams and important downtown partners/stakeholders including:

- Downtown Tempe Authority
- Arizona State University
- Community Development
- Community Services
- Parks & Special Events
- Urban Forestry & Landscape Maintenance
- Transportation & Engineering
- Public Art
- Sustainability

Current status of the project and next steps:

- September 2022: Design concept report completed
- February 2023: Design team contracted
- March/April 2023: Survey field work
- May/June/July 2023: Stakeholder, public and City Council Input
- May/June/July 2023: Conceptual design refinements
- September 2023: City Council design approval
- July 2023 - February 2024: Final engineering design
- February 2024: Construction

FISCAL IMPACT or IMPACT TO CURRENT RESOURCES:

- Preliminary Project Estimate = \$21.8M Total Cost
- Current CIP Funding = \$1.6M (FY22/23)
- CIP Request (FY23/24): \$8.6M (\$6.4M + \$ 2.2M)
- Bond Election (November 2024)
- Future CIP Request: \$11.6M (\$5.8M in FY25/26 + \$5.8M in FY26/27)

ATTACHMENTS:

PowerPoint Presentation



Downtown Streetscape Improvements

Mill Avenue

Rio Salado Pkwy. to University

**TRANSPORTATION COMMISSION
SEPTEMBER 2023**



Council Priorities



- 1.05 – Feeling of Safety in Your Neighborhood
- 3.14 – ADA Transition Plan

- 3.26 – 20 Minute City
- 4.11 – Tree Coverage
- 5.03 – Capital Investment

2



Safe and Secure
Communities



Strong Community
Connections



Quality of Life



Sustainable Growth
and Development



Financial Stability
and Vitality

Agenda

- Project Schedule & Brief Overview
- Hardscape / Sidewalk Concepts
 - Street Tree Concepts

(Input on Shade Structures, Site Furnishings, Public Art, Lighting, and Aesthetic Elements will take place later in the design process.)

Stakeholders & Staff Team

Stakeholders

- Downtown Tempe Authority & Merchants/Businesses
 - Arizona State University
 - Tempe Tourism
 - Chamber of Commerce
- Salt River Pima Maricopa Indian Community
 - Boards & Commissions:

Transportation, Sustainability and Resilience, Design Review, Neighborhood Advisory, Tempe Arts & Culture, Tempe Historic Preservation, Disability Concerns, Parks and Recreation

- Downtown Neighbors & Property Owners

Staff Team

- Parks
- Transportation
- Urban Forestry
- Arts & Culture
- Historic Preservation
- Community Development
- Neighborhood Services

Schedule Overview

Design Concept Report Completed: September, 2022

Design Team Contracted: February, 2023

Survey Field Work: March / April, 2023

Stakeholder, Public, and City Council Input: May / June / July, 2023

Conceptual Design Refinements: May - August, 2023

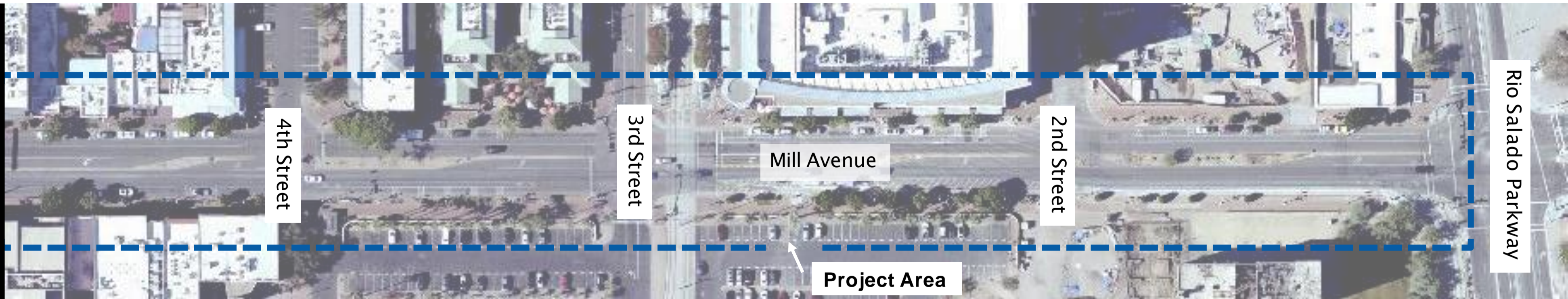
City Council Design Review September 28, 2023

Final Engineering Design: July, 2023 - February, 2024

Construction: February, 2024 - December, 2024



Project Area



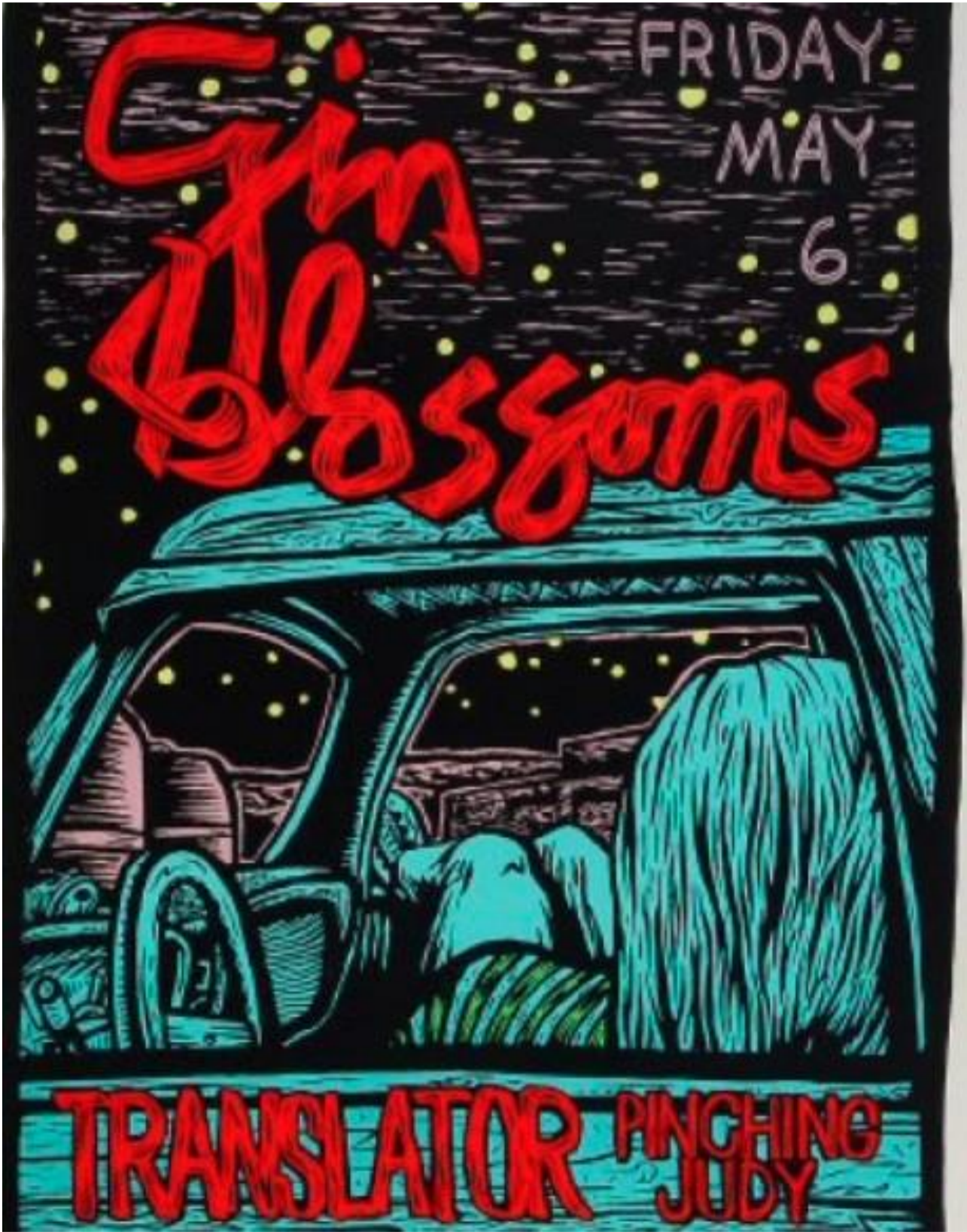
Tempe's Culture & Art



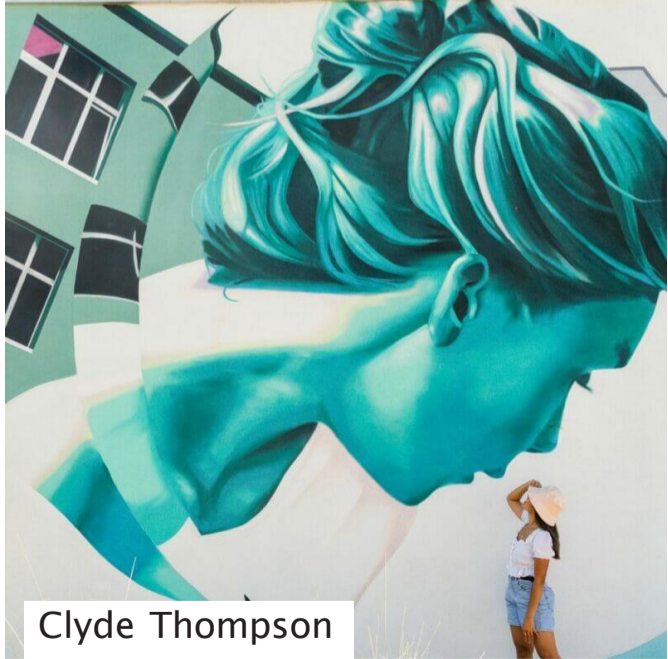
Lauren Lee



Walt Richardson



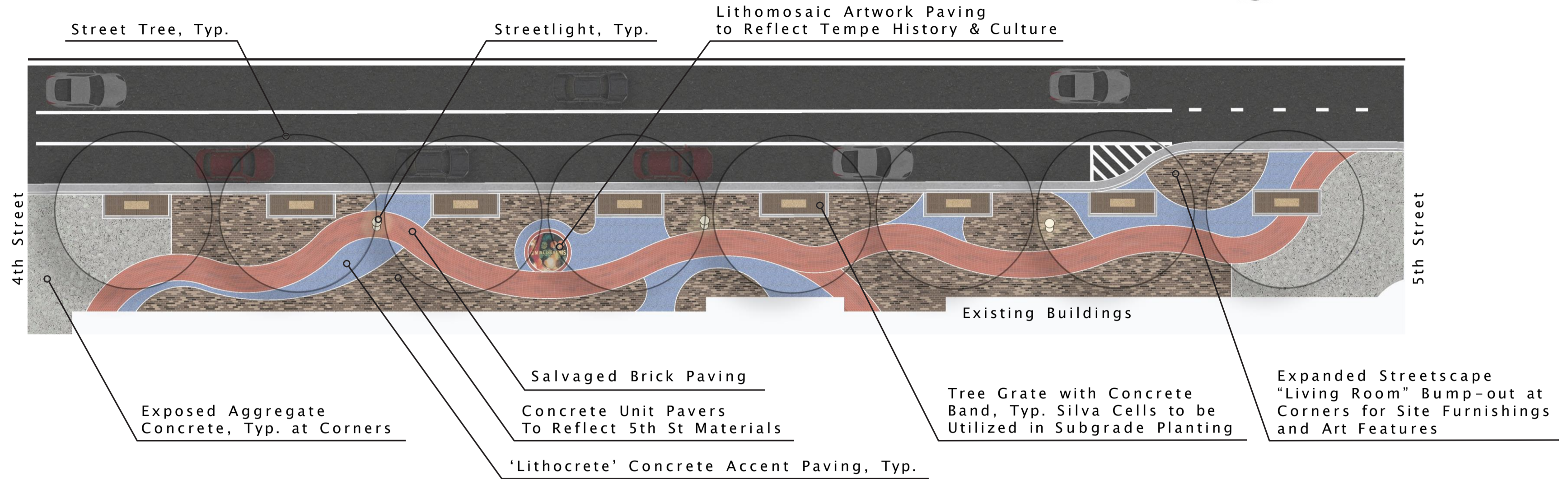
Kyllan Maney



Clyde Thompson

Streetscape Concept 1

(Concept 1 of 3)



Lithomosaic Artwork Paving



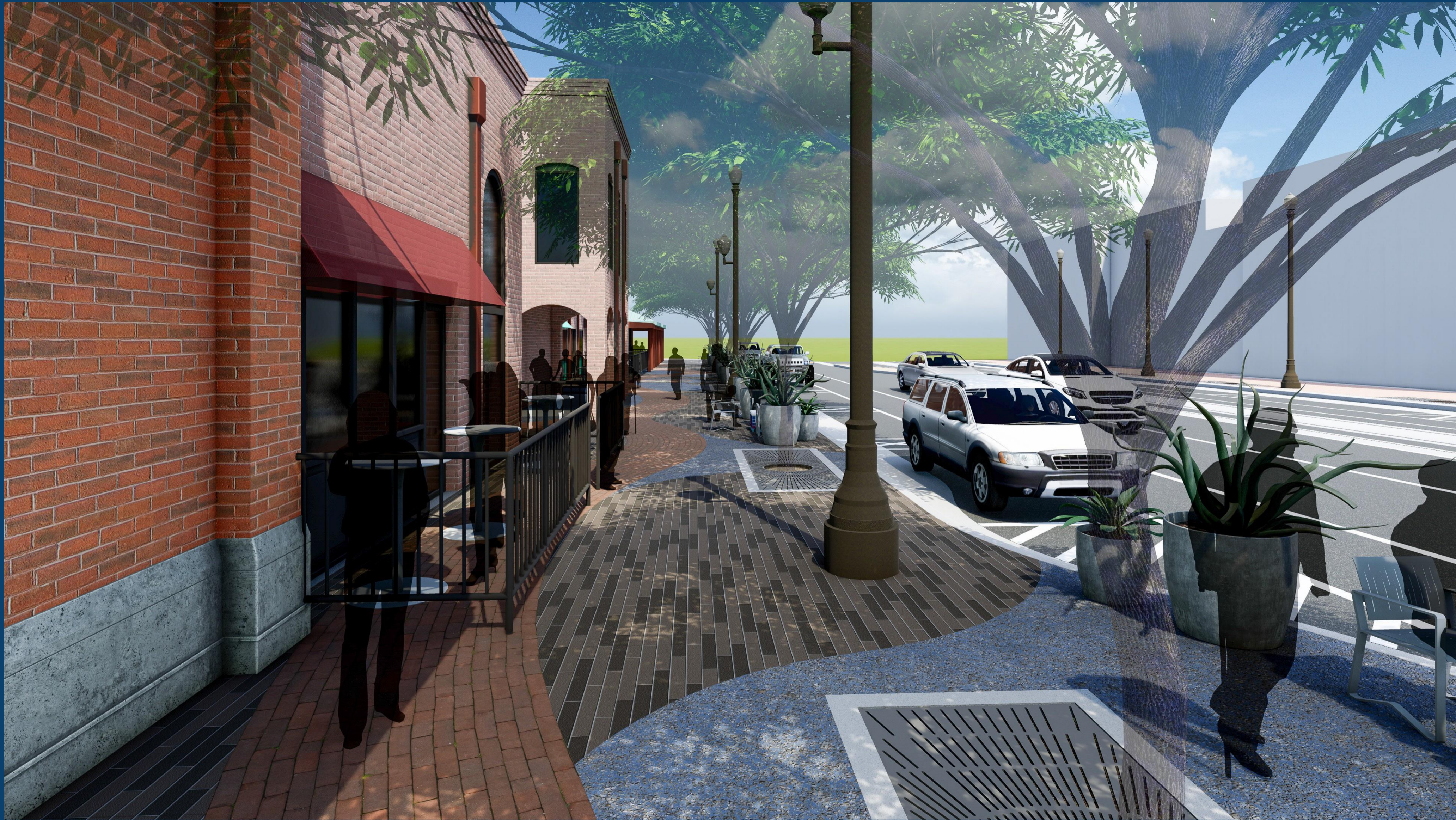
Concrete Unit Pavers



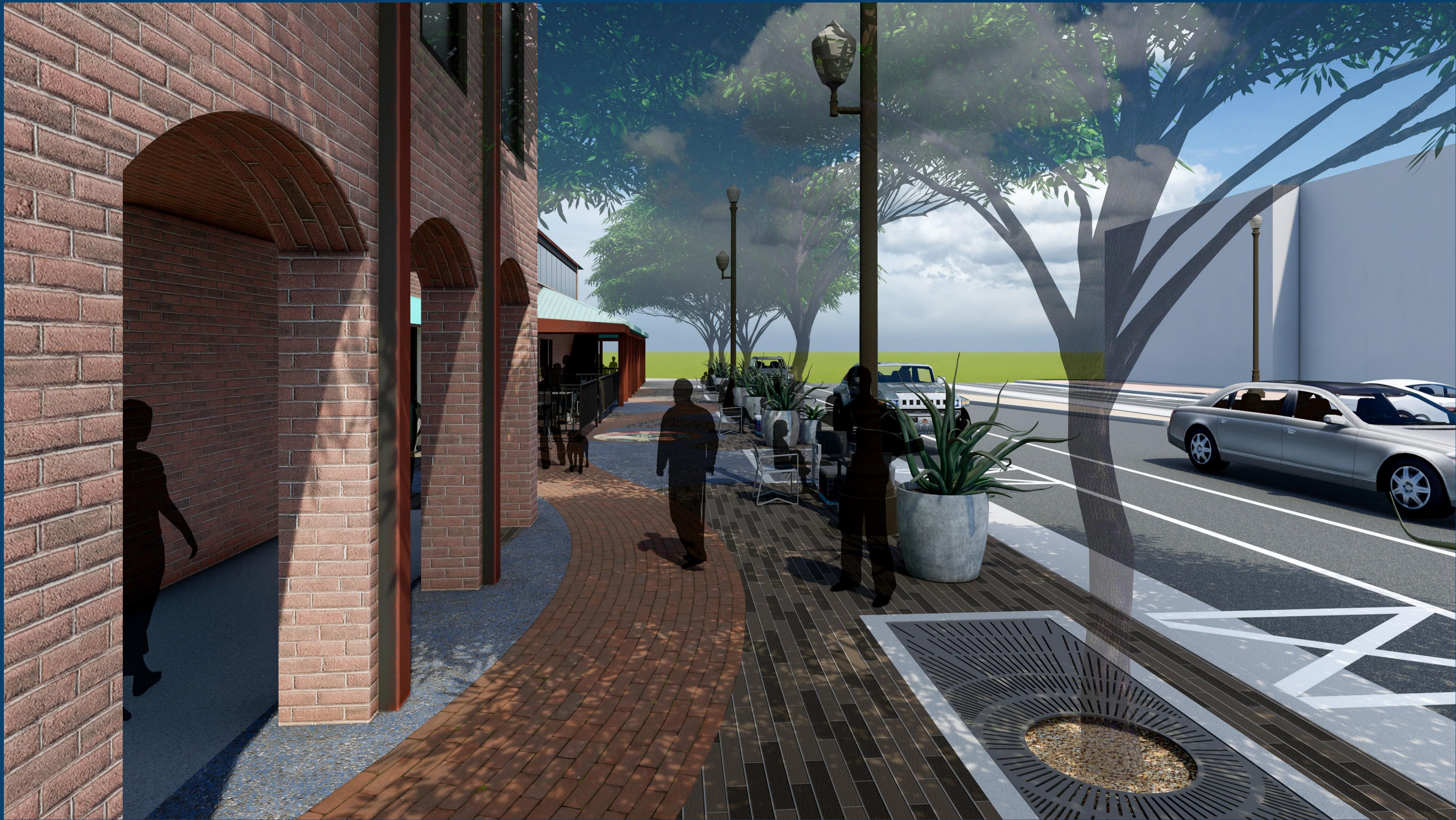
Lithocrete Accent Paving



Salvaged Brick Paving



CONCEPT 1 – VIEW LOOKING NORTH



CONCEPT 1 – VIEW LOOKING NORTH



CONCEPT 1 – VIEW LOOKING SOUTH



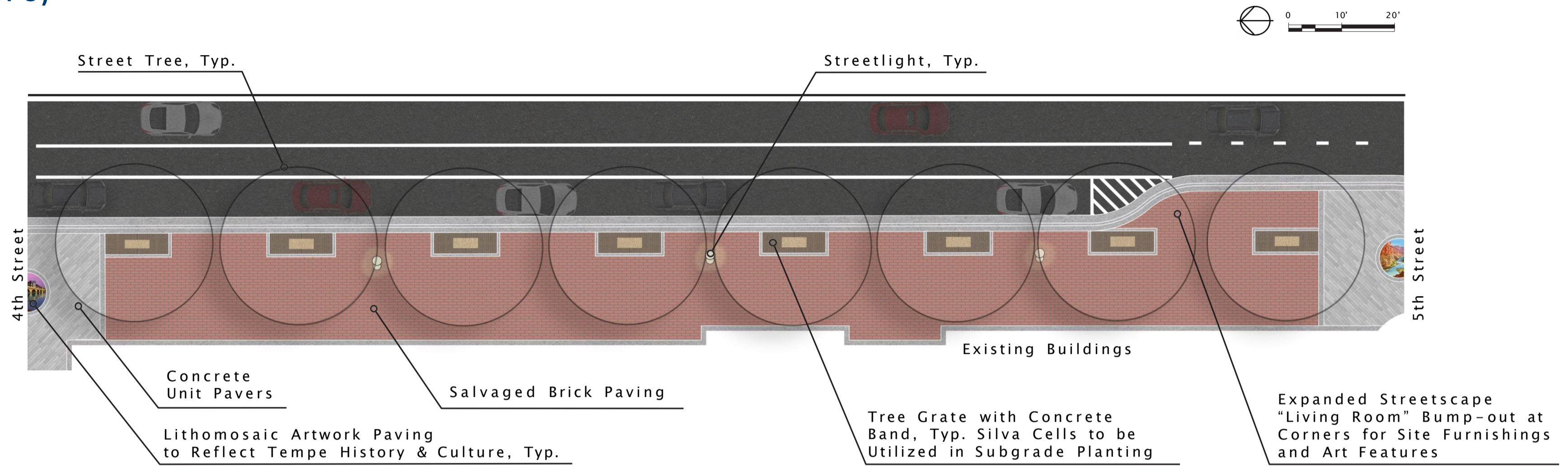
CONCEPT 1 – VIEW LOOKING NORTH



CONCEPT 1 – VIEW LOOKING SOUTH

Streetscape Concept 2

(Concept 2 of 3)



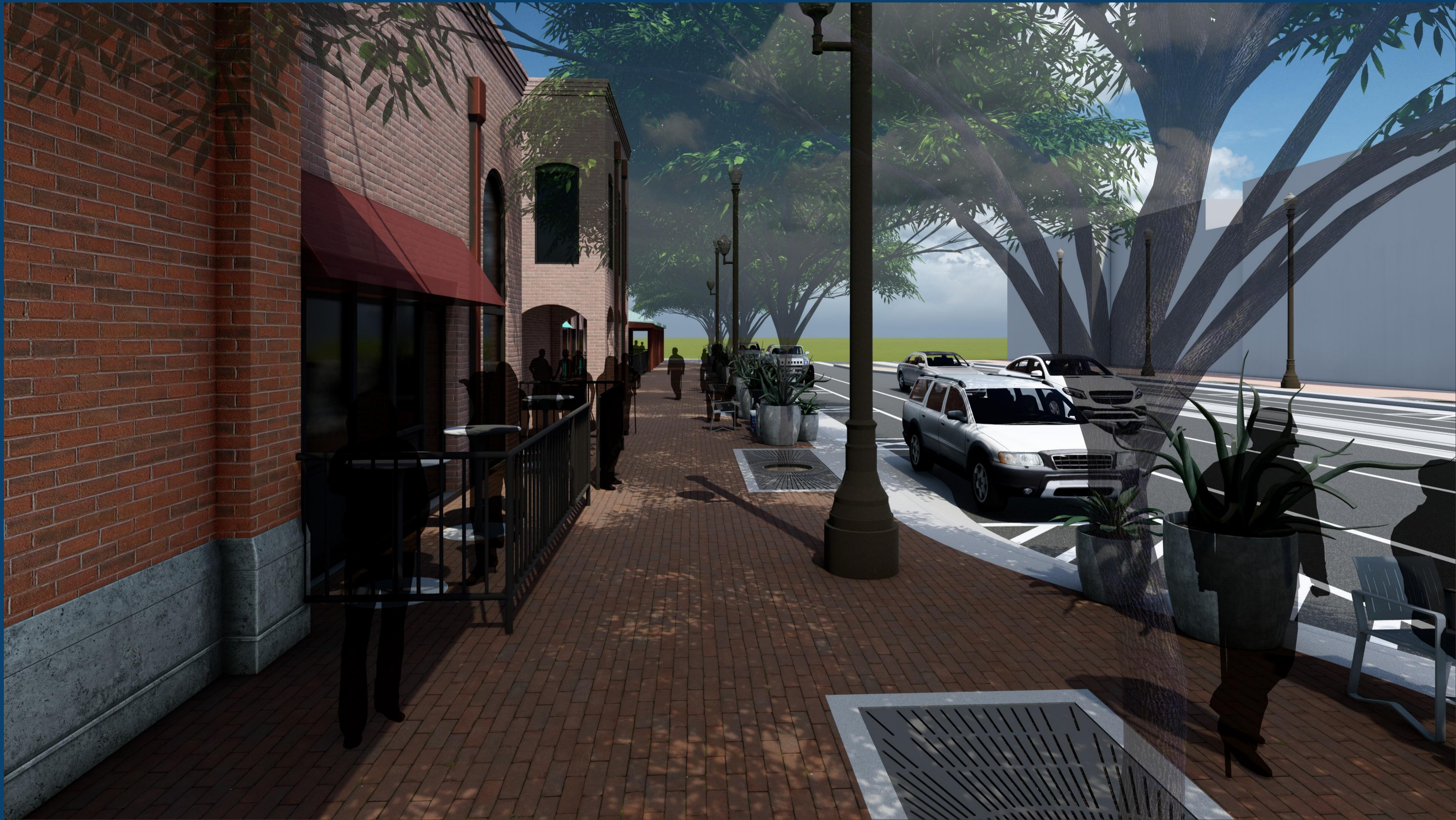
Lithomosaic Artwork Paving



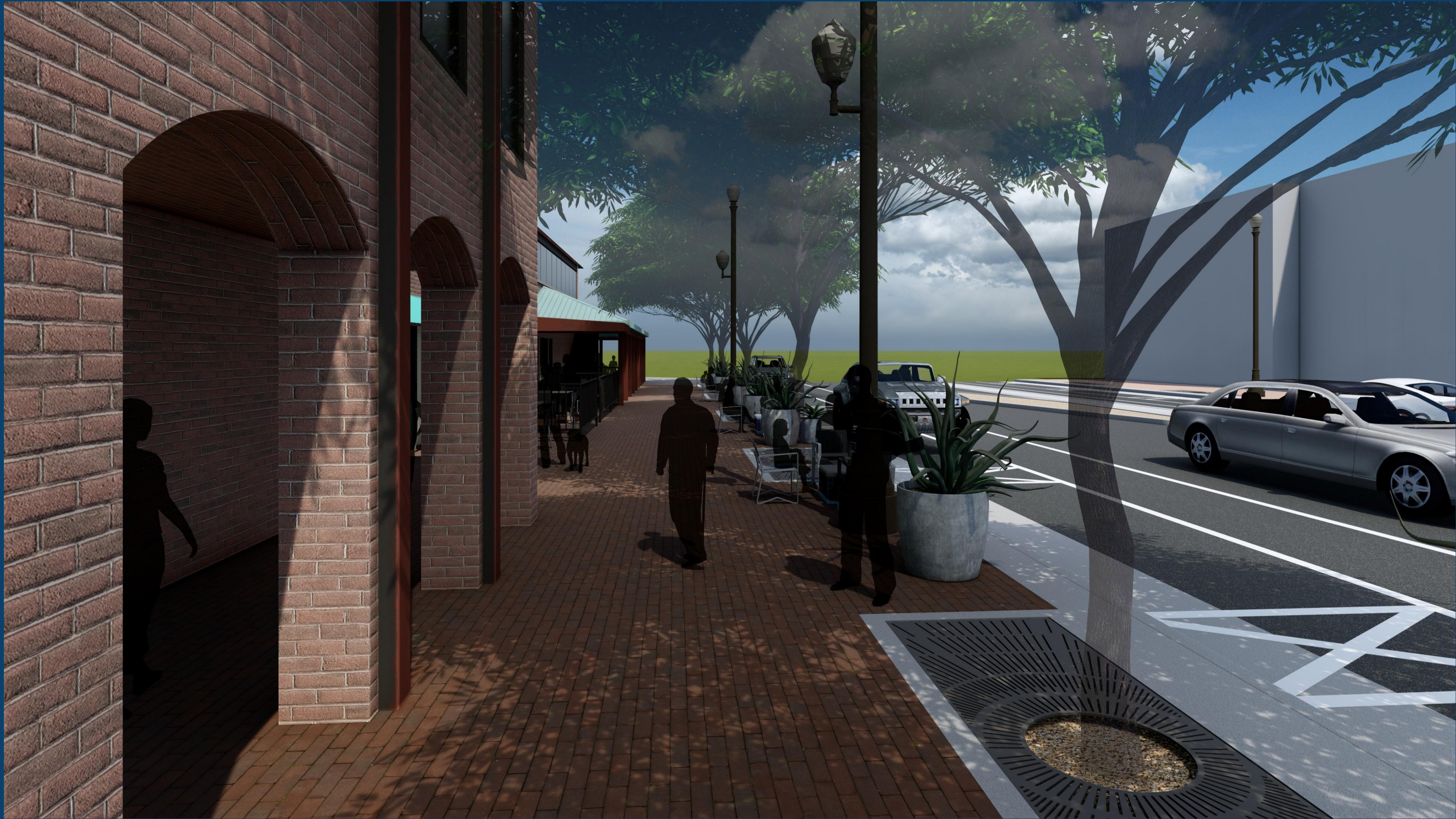
Salvaged Brick Paving



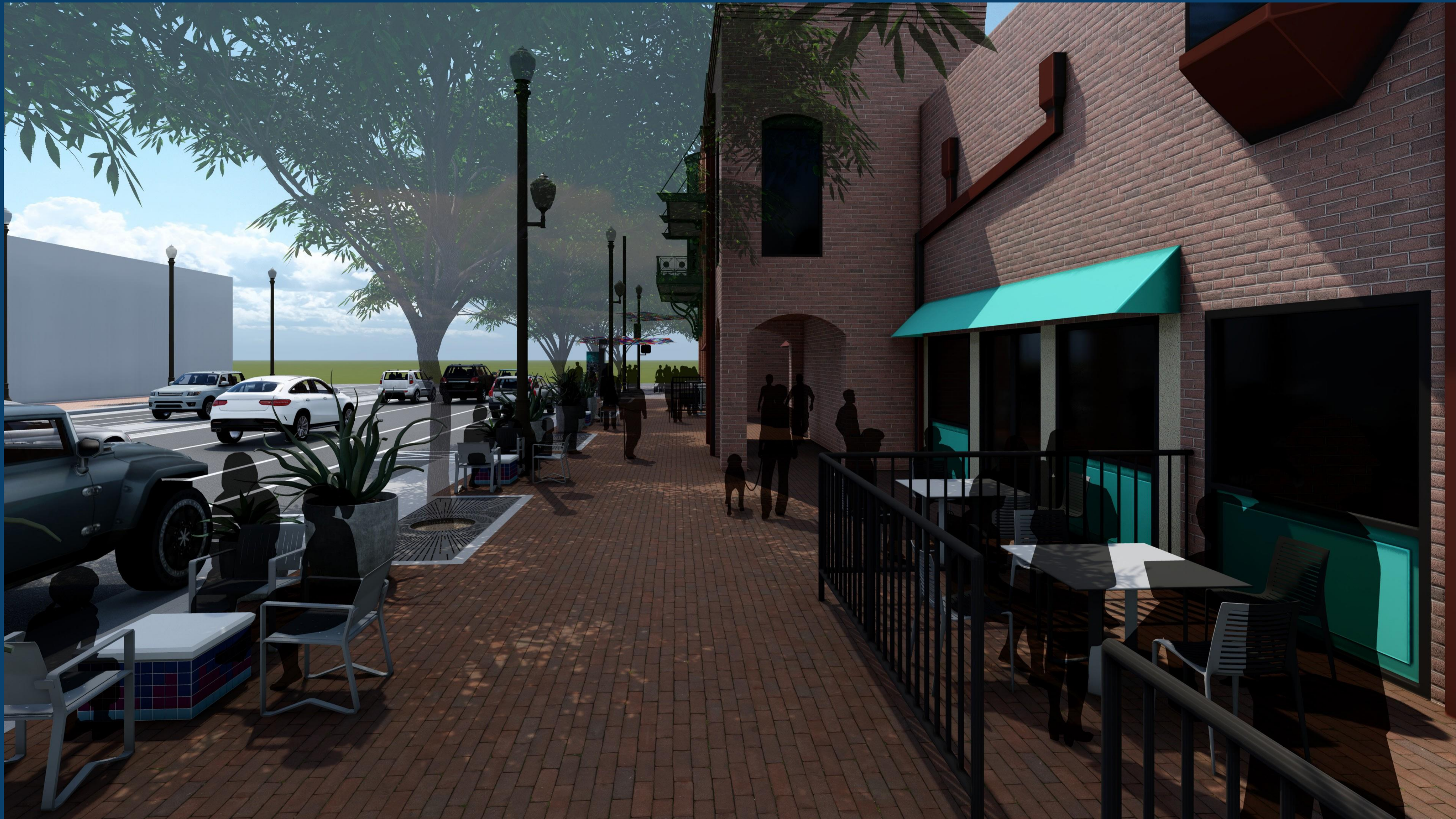
Concrete Unit Pavers



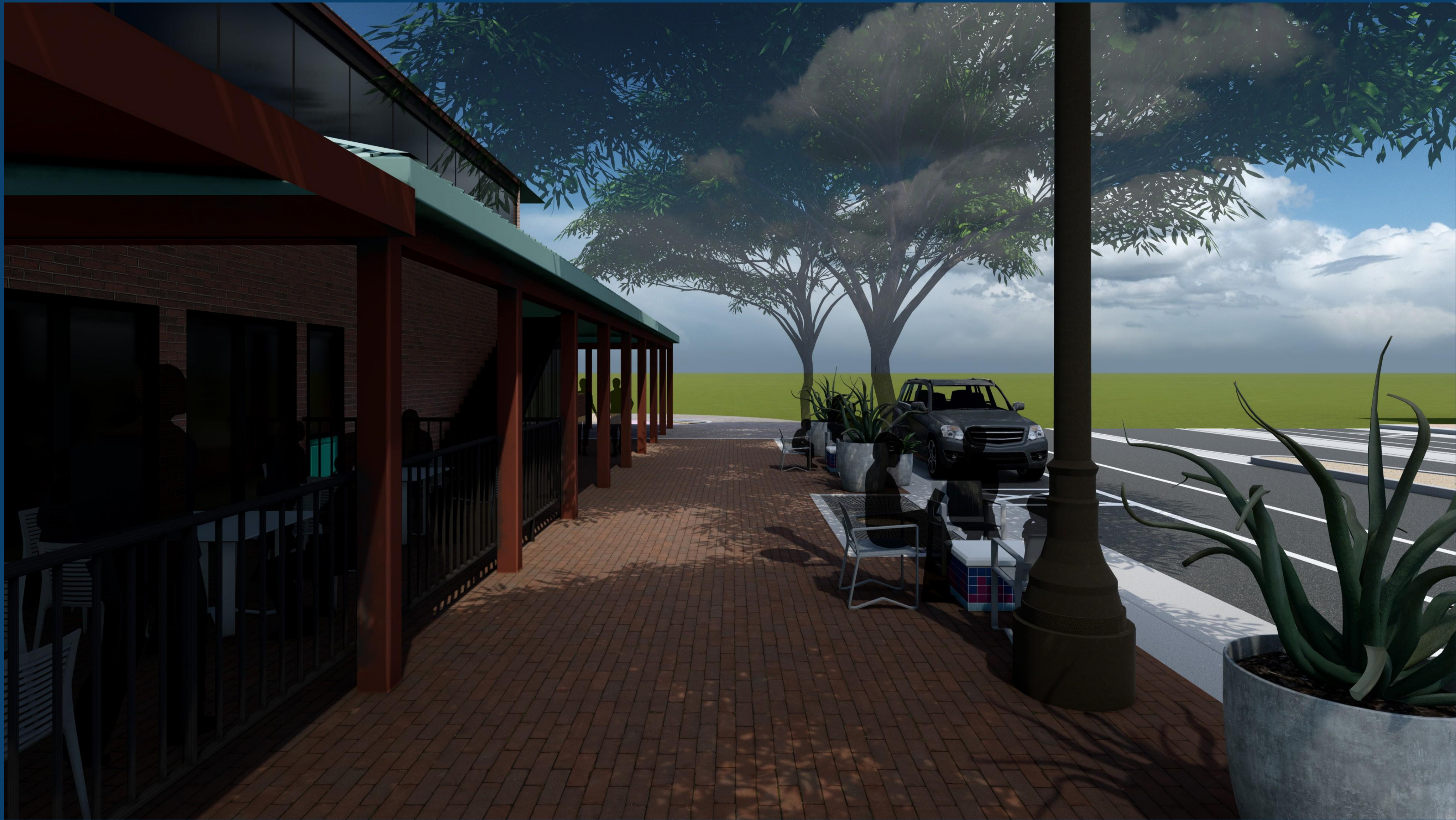
CONCEPT 2 – VIEW LOOKING NORTH



CONCEPT 2 – VIEW LOOKING NORTH



CONCEPT 2 – VIEW LOOKING SOUTH



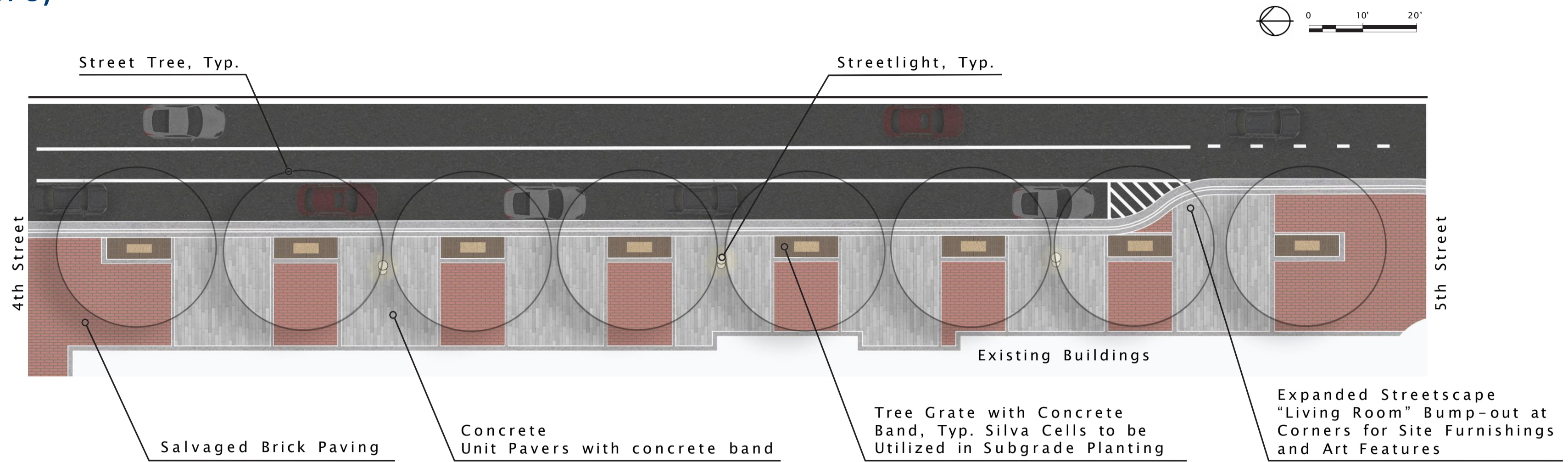
CONCEPT 2 – VIEW LOOKING NORTH



CONCEPT 2 – VIEW LOOKING SOUTH

Streetscape Concept 3

(Concept 3 of 3)



Salvaged Brick Paving



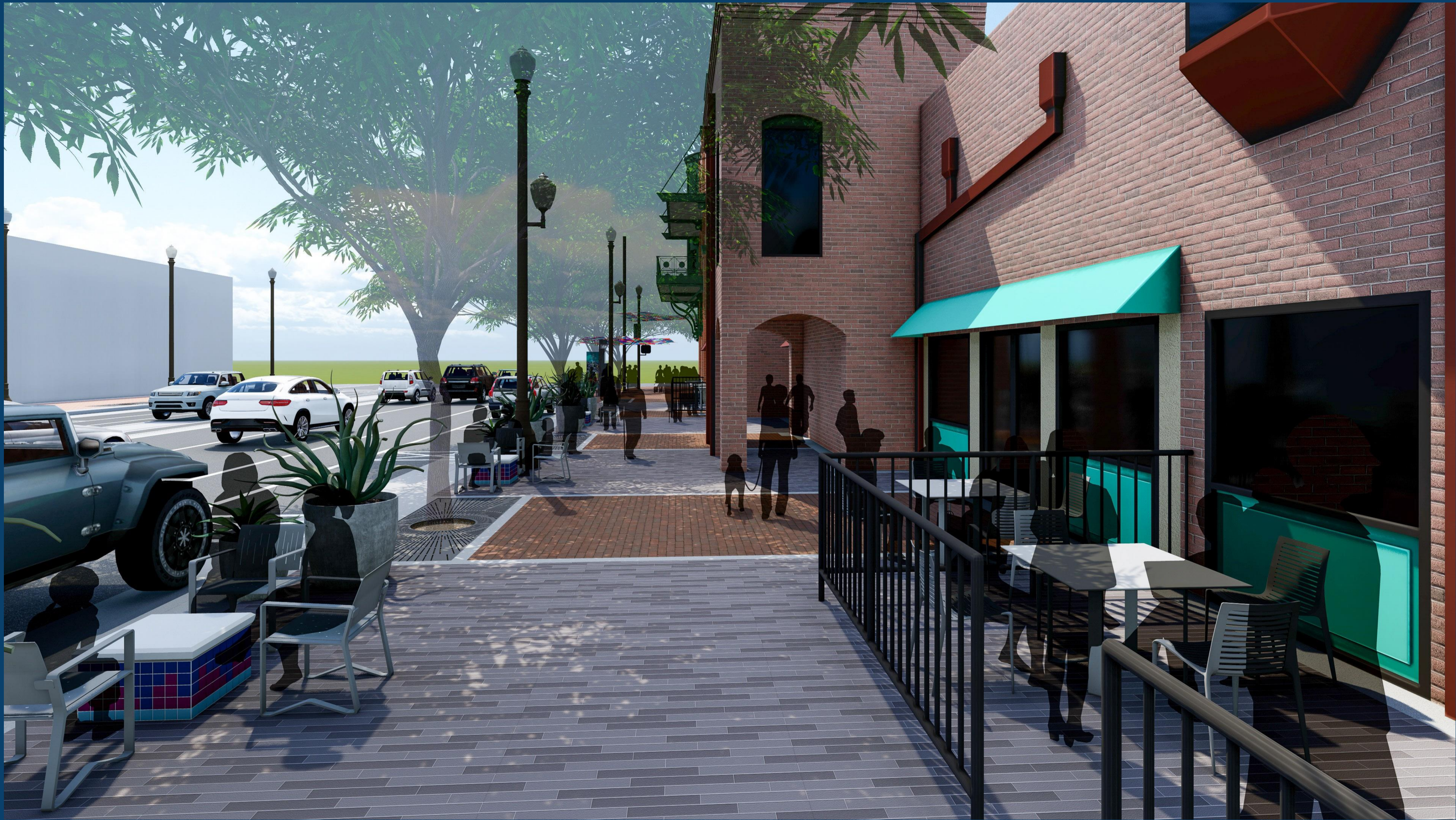
Concrete Unit Pavers



CONCEPT 3 – VIEW LOOKING NORTH



CONCEPT 3 – VIEW LOOKING NORTH



CONCEPT 3 – VIEW LOOKING SOUTH



CONCEPT 3 – VIEW LOOKING NORTH



CONCEPT 3 – VIEW LOOKING SOUTH



Lithocrete



Concrete Unit Pavers



**4" x 8" Concrete Unit Pavers
(3 Tone Mix)**



LithoMosaic



Exposed Aggregate Concrete



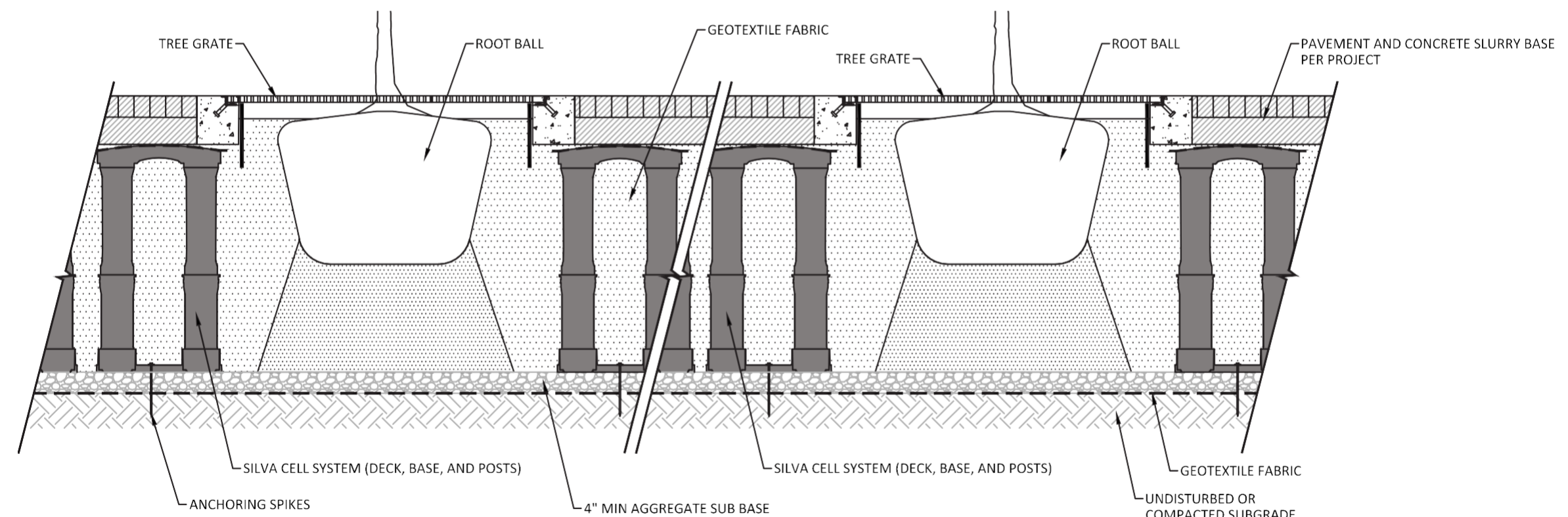
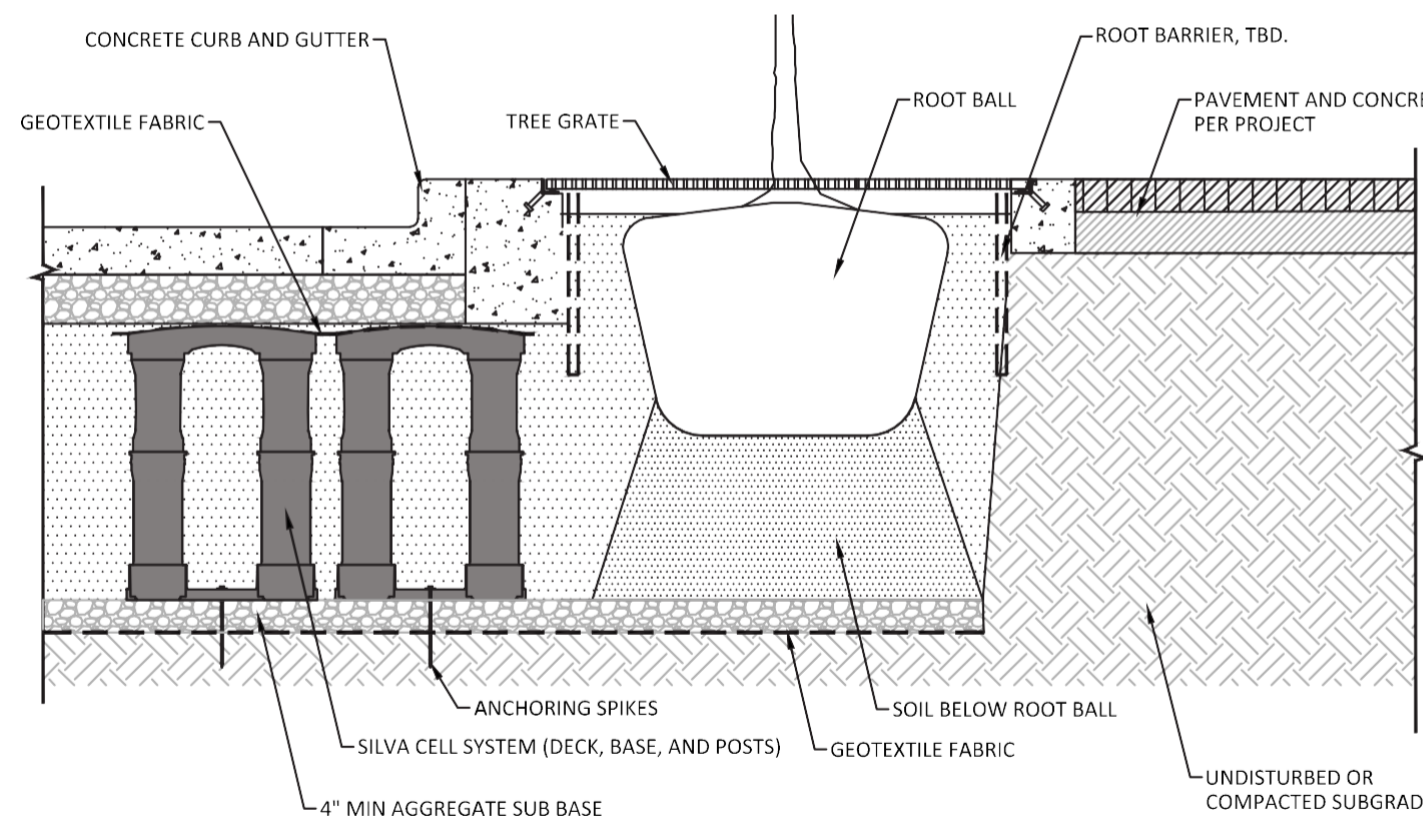
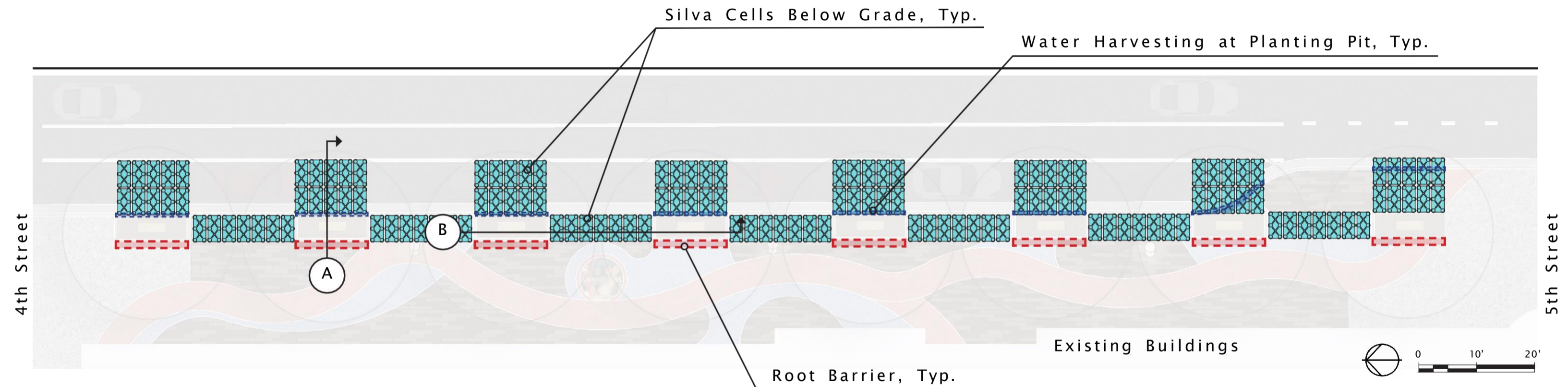
Salvaged Mill Avenue Brick

Tree Planting: Silva Cell Systems



Benefits :

- It provides additional storm-water management
- Produces larger, healthier trees with a longer life span
- Healthier, more robust trees with faster growth rate
- Long term ecological value and economic benefit
- Powerful form of Green-Infrastructure



A SILVA CELL SYSTEM - SECTION
NOT TO SCALE

B SILVA CELL SYSTEM - SECTION
NOT TO SCALE



Ficus nitida - Indian Laurel



Tipuana tipa - Tipu



Eucalyptus papuana - Ghost Gum

Tempe, Arizona
July, 2023

Mill Avenue Streetscape Improvements



Olea europaea 'Swan Hill' - Fruitless Olive



Pistacia lentiscus - Mastic Tree

Tempe, Arizona
July, 2023

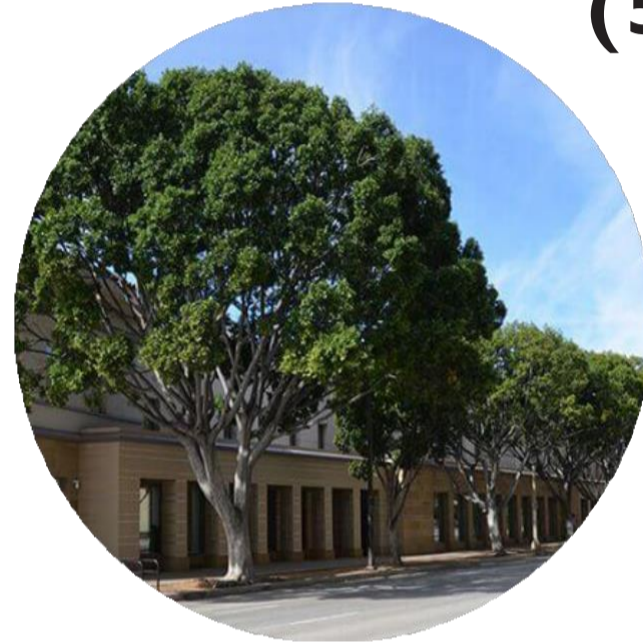
Mill Avenue Streetscape Improvements

Proposed Street Trees

Concept One

Primary Street Trees

Ficus nitida - Indian Laurel
(50%)



Tipuana tipu – Tipu
(50%)



Median/Accent Street Trees

Eucalyptus papuana - Ghost Gum



Pistacia lentiscus - Mastic Tree



Proposed Street Trees

Concept Two

Primary Street Tree (70%)

Ficus nitida - Indian Laurel



Secondary Street Tree (30%)

Tipuana tipu – Tipu



Median/Accent Street Trees

Eucalyptus papuana - Ghost Gum



Olea europaea 'Swan Hill' - Fruitless Olive



Tree Selection Takeaways

- Currently Mill Ave is +/- 100% Ficus
- New tree palette options include: more resilient, drought tolerant, climate appropriate, biodiverse urban forest options
- Retain a lesser % of Ficus but maintain historic character

Today's Request & Next Steps

- Hardscape / Sidewalk Concepts
 - Street Tree Concepts
- Public and Stakeholder Feedback: June-September
- Return to Council September 28 for Final Design Direction
 - Concurrent Work To Expedite Project

(Input on Shade Structures, Site Furnishings, Public Art, Lighting, and Aesthetic Elements will take place later in the design process.)



Schedule Overview

Design Concept Report Completed: September, 2022

Design Team Contracted: February, 2023

Survey Field Work: March / April, 2023

Stakeholder, Public, and City Council Input: May / June / July, 2023

Conceptual Design Refinements: May / June / July, 2023

City Council Design Approval: September 28, 2023

Final Engineering Design: July, 2023 - February, 2024

Construction: February, 2024 - December, 2024



Thank You

 **J2 Design**

MEMORANDUM



TO: Transportation Commission
THROUGH: Shawn Wagner, Deputy Community Services Director, Parks and Recreation, Ext.5299
FROM: Erin Kirkpatrick, Community Services Manager, Parks and Recreation, Ext.8112
Mercedes Payne, Community Services Manager, Parks and Recreation, Ext.5185
DATE: September 12, 2023
SUBJECT: Parks and Recreation Equity Study, Making Space: An Equity Study for Parks and Recreation

PURPOSE:

The purpose of this presentation is to provide Transportation Commission Members with an update on Making Space: An Equity Study for City of Tempe Parks and Recreation.

RECOMMENDATION OR DIRECTION REQUESTED:

Staff is seeking feedback from the Transportation Commission on the Equity Study draft.

CITY COUNCIL STRATEGIC PRIORITY AND RELATED PERFORMANCE MEASURE:

- 1.23: Feeling of Safety in Parks
- 3.16: Quality of City parks, recreation, arts, and cultural centers
- 3.17: Quality of Community Services programs

BACKGROUND INFORMATION:

Tempe strives to provide its community members and visitors with valuable park and recreation experiences through a diverse offering of parks, programs, events and facilities. Making Space, an Equity Study for Tempe Parks and Recreation is the first action item from the 2021 Parks and Recreation Master Plan. It builds upon previous equity map analysis, identifying potential gaps and opportunities in our overall service, and providing concrete strategies to meet the needs of all community members. We are excited to share the preliminary draft of this study with you.

Colorado-based Design Workshop has been the lead consultant in this effort, supported by AHA Alliance, an East Valley-based firm. In addition to the consultant and internal project team, a Technical Advisory Committee was formed including staff within multiple city departments, as well as one member of the Parks, Recreation, Golf & Double Butte Cemetery Board, ensuring that the overall process and final recommendations are consistent with and support other city planning efforts and strategic priorities. Other key partners include the City Council, boards and commissions, community members (through both formal and informal means), park, facility, and program users, community partners and service providers. The overall outreach and engagement process provided and took advantage of targeted and passive opportunities to listen and engage, putting the tenants of Equity in Action into practice.

The draft Making Space: An Equity Study for Tempe Parks and Recreation provides a lens through which to focus and prioritize how we deliver recreation services, programs, amenities, and facilities as well as recommendations for staffing and employee development that prioritizes diversity, equity, and inclusion. This comprehensive analysis, rooted in robust community engagement, includes an overall assessment of data that can result in disproportional outcomes in specific geographic areas of the city, termed Equity Zones. An analysis of socioeconomic inequities, environmental inequities, park and recreation use and experience, and the overall distribution, condition, and investment in our parks and recreation facilities has resulted in goals and related strategies for implementation, many aligned directly with initiatives from the Parks and Recreation Master Plan.

The overall goals and strategies for this effort are structured around these six (6) guiding principles:

- A. Spaces and Programs for All
- B. Customized Experiences
- C. Expanded Parks and Recreation Access
- D. Vibrant, Active and Diverse Parks and Recreation

- E. Safe Environments,
- F. Equitable Prioritization

Making Space, like the Parks and Recreation Master Plan, is constructed through use of StoryMaps. This format lends itself to the geographical data presented in this particular study, and also allows for the reader to interact, zooming in and out, moving through any section in any order, and clicking to take a deeper dive into the analysis memos and public input summaries throughout their journey. The study draft is organized into three overall sections, titled **Learn**, **Evaluate**, and **Act**, providing in turn background and a synopsis of the study, overall equity analysis, and recommended goals and strategies to promote diversity, equity, and inclusive services and investments in parks and recreation in Tempe. One tool created from this study is the Equity Investment Matrix, which organizes the analysis across City of Tempe Character Areas in order to create a prioritization of strategies that are geographically specific and account for not just what we currently have in our parks and recreation system, but where we can and should target new investments.

We hope you take some time to explore the documents and share your feedback.

NEXT STEPS:

Engaging with other boards and commissions, City Council, and the community.

ATTACHMENTS:

Please note due to the size of the StoryMap, the decision was made to provide a weblink for your review. Please click on the weblinks below to interact with the DRAFT Parks and Recreation Equity Study and webpage.

[StoryMap Link](#)

[Project webpage](#)

Making Space: An Equity Study for Tempe Parks and Recreation

Erin Kirkpatrick, Community Services Manager
Julie Hietter, Community Services Admin
Manager



Tempe

Making waves in the desert



making space:

AN EQUITY STUDY FOR
PARKS AND RECREATION

City of Tempe

Diverse Park Programming
Fair Park Access
Equitable Levels of Service

Presentation Outline

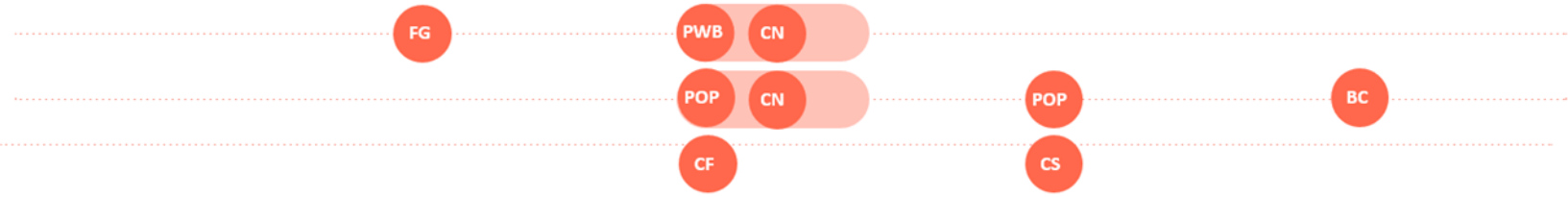


- Overview of the Making Space project and timeline.
- Summary of engagement strategies and overall data analysis.
- Introduction to the draft StoryMaps.
- Request for feedback.

Schedule

- FG FOCUS GROUP + STAKEHOLDER SESSIONS
- PWB PARK PERFORMANCE WORKBOOK ASSESSMENTS
- BC PRESENTATION WITH BOARDS, COMMISSIONS, AND COUNCILS
- CF EDUCATIONAL COMMUNITY FORUM
- CS COMMUNITY SURVEY
- POP POP-UP EVENTS
- CN COMMUNITY NAVIGATOR SUPPORT

PROJECT TEAM KICKOFF



City Priorities and Plan Principles



Safe and Secure
Communities



Strong Community
Connections



Quality of Life



Sustainable Growth
and Development



Financial Stability
and Vitality

- **1.23:** Feeling of Safety in Parks
- **3.16:** City Recreation, Arts, and Cultural Centers
- **3.17:** Community Services Programs

"My grandfather has physical limitations that prevent him from using city park spaces. If you had wide sidewalks, shade, a place to sit down, he could join me at the park."

How are the unhoused being valued in Tempe?

"Improved signage educating community on indigenous culture is needed."

"I would like to see more playgrounds that are better suited for adults (including swings, climbing apparatus, parkour, fitness challenges, etc.) built in the community"

"I would have water games during summer and winter opportunities for kids, teens, and adults. Will have a chance to learn languages and DIY. The most fun part is that I can go and relax."

"Tempe parks need to be more accessible to everyone: those with disabilities, those without cars, etc."



How did we hear from the community?



300 PARK ASSESSMENTS

100+ INTERCEPT SURVEYS

AUDIENCE:

Park Users, 11 Community Navigators, Park Staff



4 FOCUS GROUPS

18 PARTICIPANTS

AUDIENCE:

Those with special interest in parks and recreation system



10 NEIGHBORHOOD POP-UP EVENTS

2000+ ATTENDEES

AUDIENCE:

Park Users, Community Navigators, Community Arts Staff



YOUTH-FOCUSED ENGAGEMENT

167 YOUTH PARTICIPANTS

AUDIENCE:

Tempe High School & North Tempe Boys and Girls Club Members



MAKING SPACE FESTIVAL

300 ATTENDEES

AUDIENCE:

Community & Partners



COMMUNITY SURVEY

447 PARTICIPANTS

VIRTUAL MEETINGS

AUDIENCE:

General Public

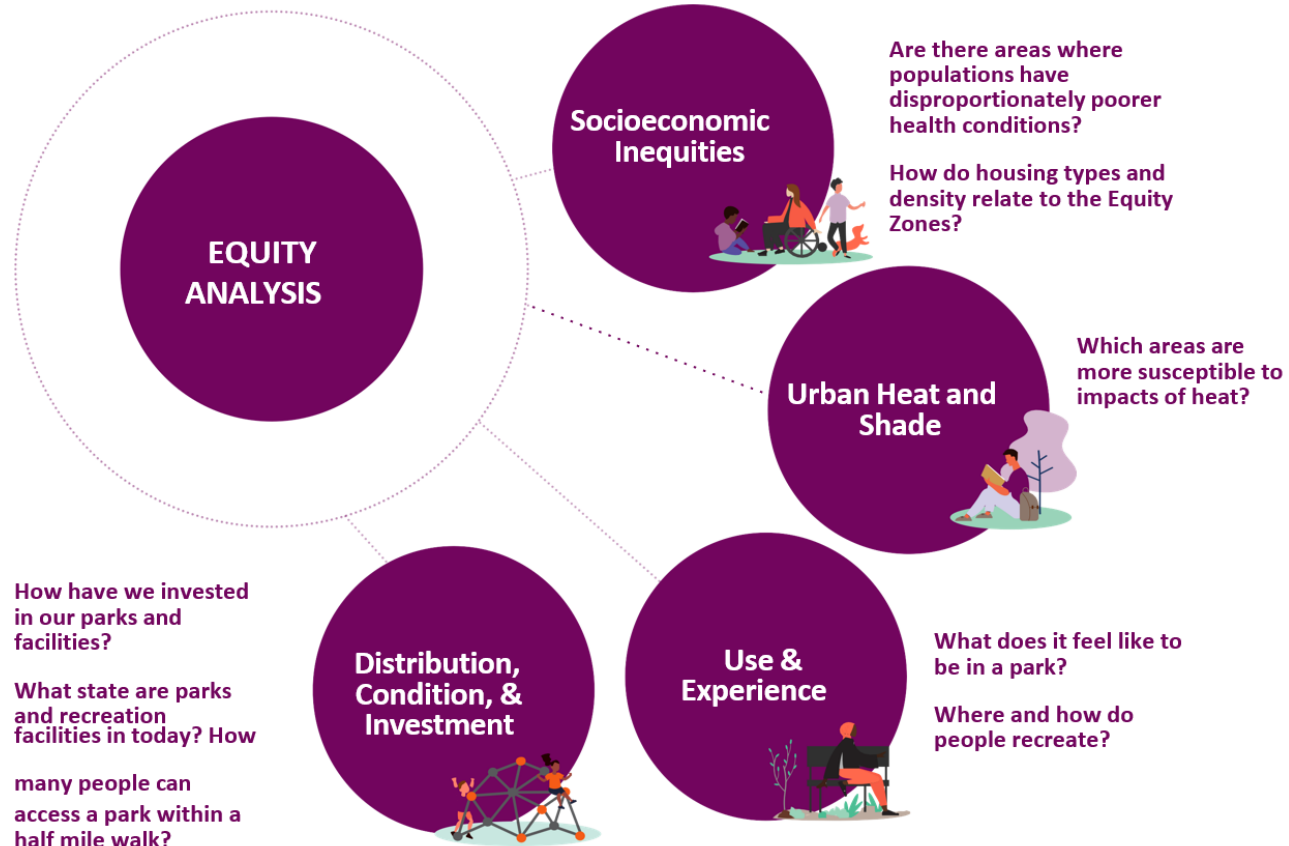
100+ STAFF

gave feedback on their experience with the Division

AUDIENCE:

City of Tempe Parks and Recreation Employees

What questions did data help us to answer?



How did we use this information?



- A. Spaces and Programs for All
- B. Customized Experiences
- C. Expanded Parks & Recreation Access
- D. Vibrant, Active, and Diverse Parks and Recreation
- E. Safe Environments
- F. Equitable Prioritization Process

21 Goals

Integrates and advances
2021 Parks & Recreation Master Plan Goals

Strategies for Implementation

Includes Priority Rubric for Equity-
Driven Decision-Making

Navigating the StoryMaps



1. LEARN: [About Tempe's Parks and Recreation Equity Study](#)



2. EVALUATE: Explore the Findings about Equity and...



3. ACT: Review the Principles, Goals, and Strategies



Share your feedback:



We have created a form for board members and commissioners to share feedback here:

<https://forms.office.com/g/8CUh4hhfbY>

The public review process will begin in October.

Feedback for the DRAFT StoryMap
for Making Space: An Equity Study
for Parks and Recreation





TEMPE
PARKS+
RECREATION
equity study

**Thank
You!**



MEMORANDUM

TO: Tempe Transportation Commission
FROM: Chase Walman, Principal Planner, 480-858-2072
DATE: September 12, 2022
SUBJECT: Grade Separated Crossing at CCW & UPRR
ITEM #: 5



PURPOSE:

The purpose of this memo is to provide the Commission with a review of the draft 15% design and project assessment report for a project which aims to improve accessibility over the Union Pacific Railroad from Apache to Broadway. The proposed improvements include a new signalized crossing at Broadway and Los Feliz, protected bike lanes, new sidewalk, and a pedestrian bridge which emphasizes shade, public art, accessibility, and crime prevention through environmental design.

RECOMMENDATION OR DIRECTION REQUESTED:

Information only.

CITY COUNCIL STRATEGIC PRIORITY:

- Performance Measure 3.26 - 20 Minute City
- Performance Measure 3.14 - ADA Transition Plan

BACKGROUND INFORMATION:

The Bike/Ped Bridge Over Union Pacific Railroad project is identified in Tempe's Transportation Master Plan. In 2016, the Commission recommended staff put forward an application to compete for Maricopa Association of Governments (MAG) Design Assistance funding to explore the feasibility of creating a 7-mile bike/ped corridor from Warner Road to the Rio Salado Path System, generally along Country Club Way and Smith Road. Tempe was ultimately awarded \$83,000 to develop a preliminary project assessment report and design concepts for the entire corridor. As part of the initial study, an alignment was identified for a grade separated crossing over the Union Pacific Railroad which required its own detailed study. Given the cost of the project, the entire bike/ped corridor was phased; the first phase will begin construction from Warner Road to the US60 in early 2024. Additional phases north of the US60 are programmed to begin construction in 2025.

In 2022, staff put forward an application to again compete for MAG Design Assistance funding specifically for a more detailed preliminary design and project assessment report for the segment from Broadway to Apache, over the Union Pacific Railroad. Tempe was ultimately awarded \$175,000 to develop the detailed project assessment report, 15% designs, and cost estimate for this segment. In the Summer of 2023, the City, in partnership with MAG, retained design consultant TY LIN to develop the report, plans, and estimate for the project. Two public meetings will be held to receive feedback on the preliminary 15% design alternatives:

- Thurs., September 14 at noon.
via Zoom, tempe.gov/UPRRBikePedBridge
- Thurs., September 14 at 6:00p.
In person at 6 p.m. at Escalante Multi-Generational Center, 2150 E. Orange Street

Additional public meetings are anticipated to be held in early 2024. It is anticipated that the final project assessment report, 15% designs, and cost estimate will be complete in the Summer of 2024. There is not currently any identified funding for the final design/construction of the project.

FISCAL IMPACT or IMPACT TO CURRENT RESOURCES:

Design:

\$175,000 Maricopa Association of Governments Design Assistance Grant (Preliminary Design)

No funding currently identified for Final Design.

Construction:

No funding currently identified for Construction.

ATTACHMENTS:

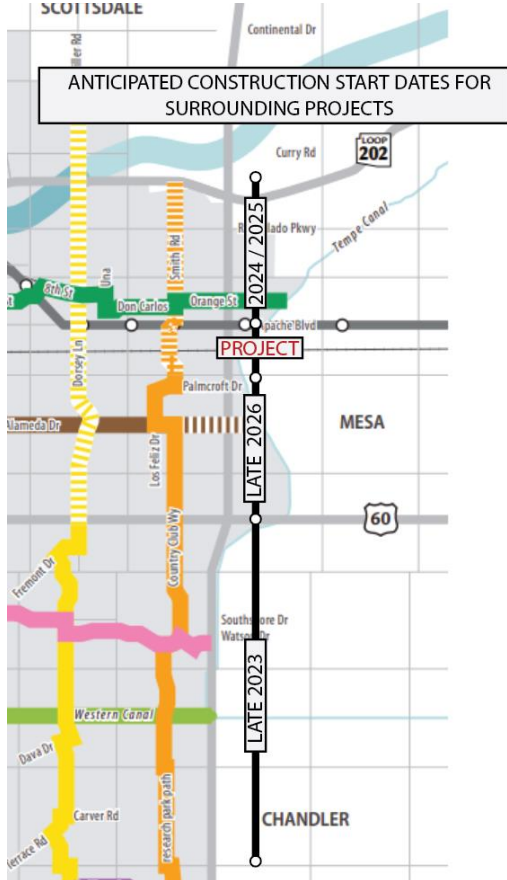
PowerPoint

Grade Separated Crossing at CCW & UPRR

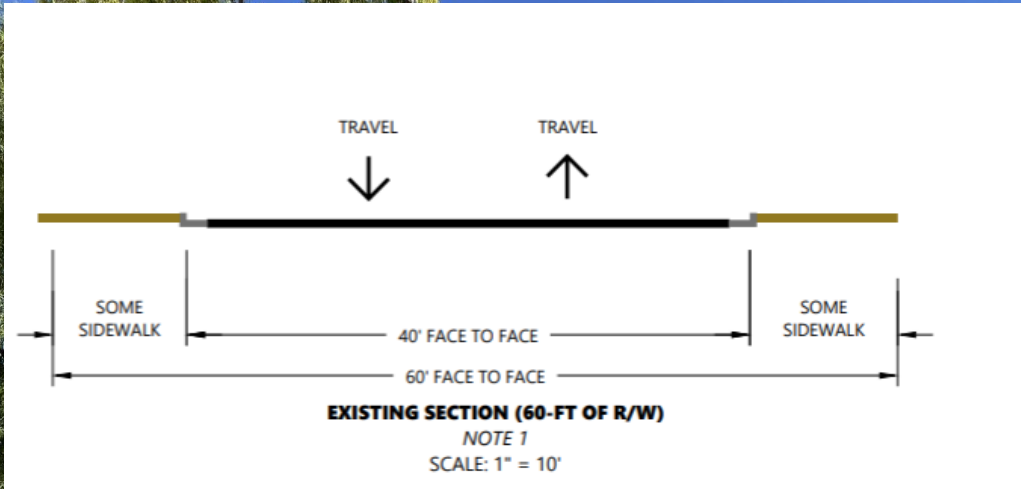
**Transportation Commission
September 12, 2023**



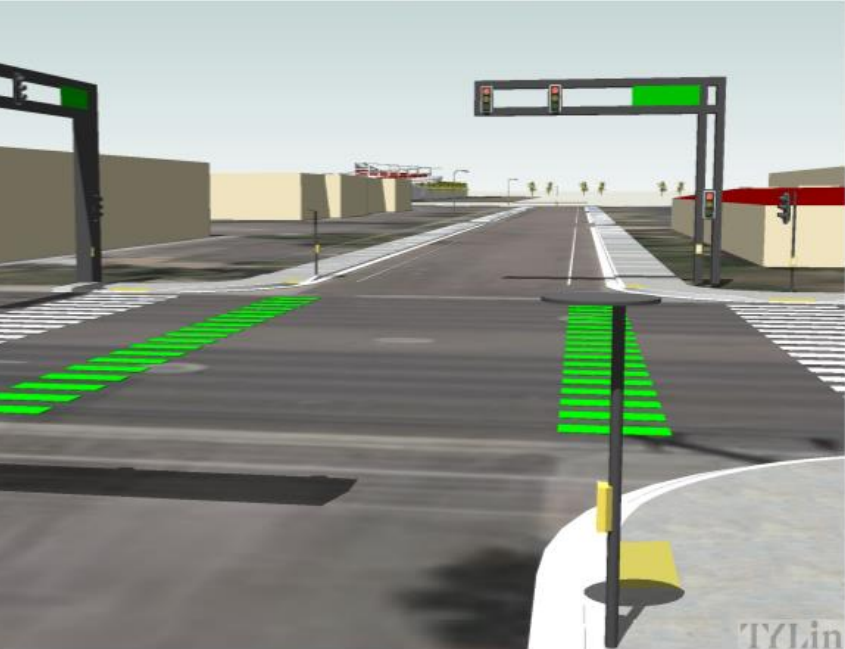
This Project



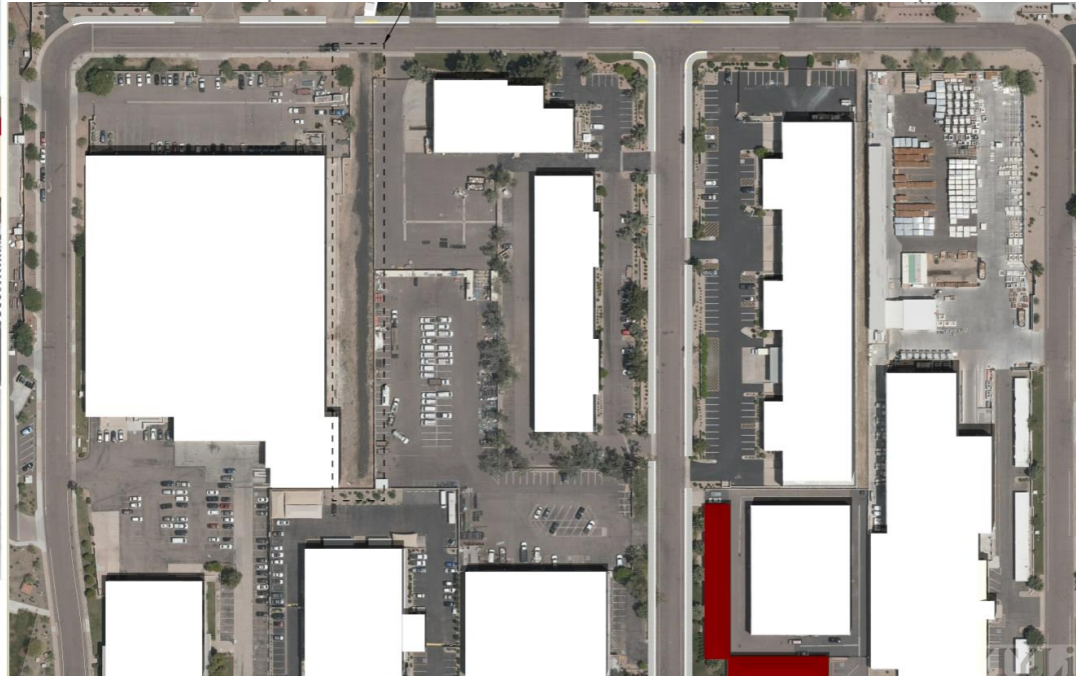
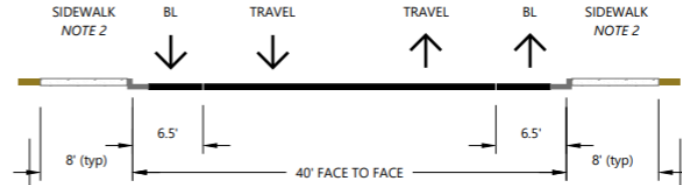
Broadway to Union Pacific Railroad: Existing



Broadway to Union Pacific Railroad : Proposed



IMPROVED INTERSECTION VIEW
LOS FELIZ DRIVE AT BROADWAY ROAD LOOKING NORTH
NTS



Bike / Pedestrian Bridge over Union Pacific Railroad: Existing



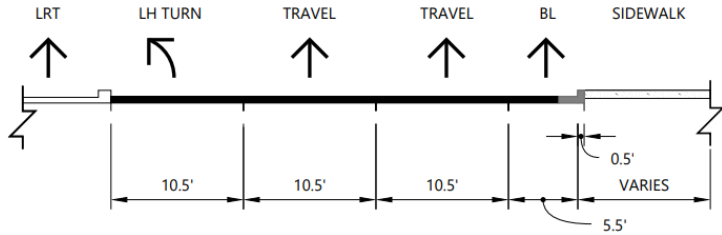
Bike / Pedestrian Bridge over Union Pacific Railroad: Proposed



Apache Blvd: PD Substation Drive to Smith Road: Existing

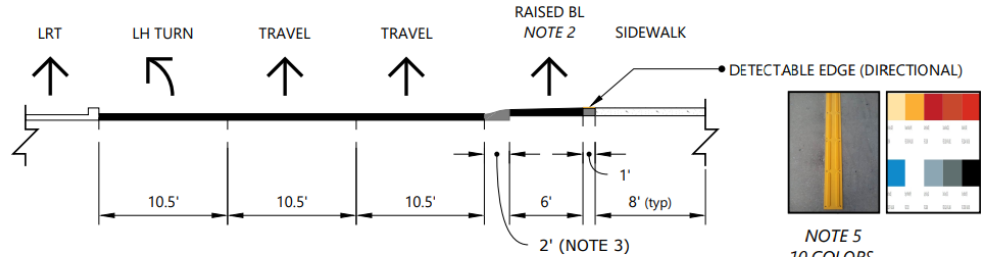


Apache Blvd: PD Substation Drive to Smith Road: Proposed



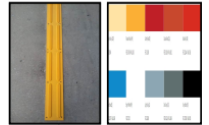
EXISTING SECTION (MOST CONSTRAINED, ESTIMATED)

NOTE 1
SCALE: 1" = 10'



**APACHE CONCEPT 1 - SECTION
APACHE CONCEPT 2 - SECTION**

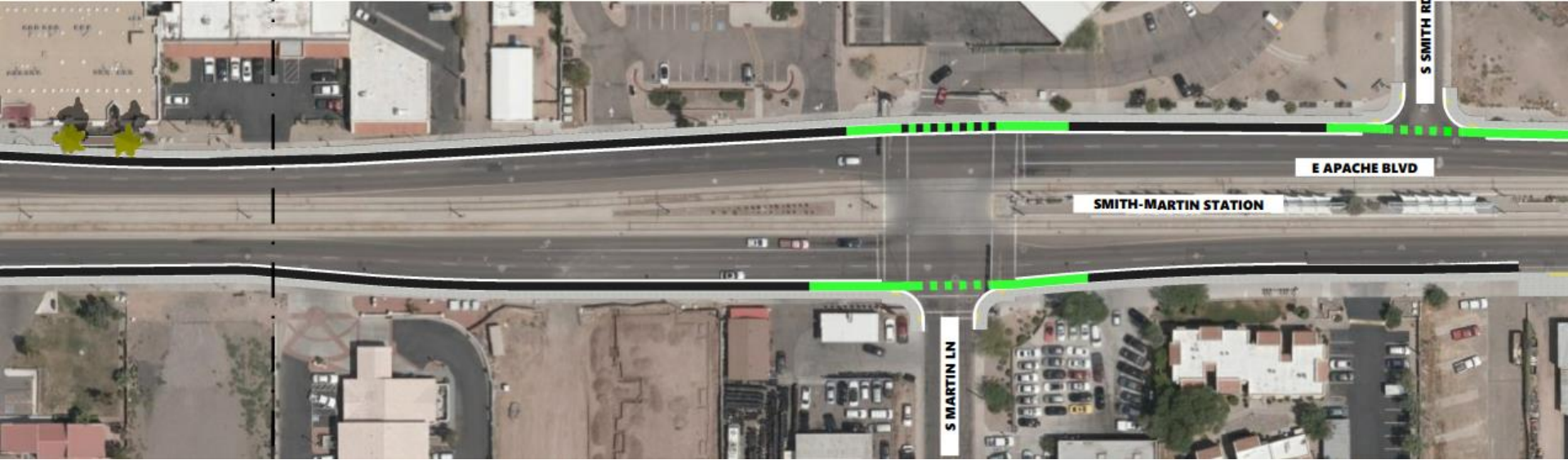
NOTE 4
SCALE: 1" = 10'



NOTE 5
10 COLORS
AVAILABLE

NOTE 6

Apache Blvd: PD Substation Drive to Smith Road: Proposed



The background features a central light blue circle surrounded by a series of concentric, slightly irregular rings in dark blue and yellow, creating a tunnel-like or ripple effect.

Next Steps

Next Steps



- Transportation Commission **Current**
- Public Meetings Round 1 **September 14**
- Draft PA Report **December 2023**
- Transportation Commission Round 2 **January/February 2024**
- Public Meetings Round 2 **January/February 2024**
- Final PA Report, 15% plans, Cost Estimate **Spring 2024**
- Anticipated Final Design/Construction Start **TBD, No identified funding at this time**



MEMORANDUM

TO: Tempe Transportation Commission
FROM: Lyle Begiebing Transportation Planner, 480-350-2897
DATE: September 12, 2023
SUBJECT: Kyrene, Roosevelt, Farmer Bike/Ped Improvement Project
ITEM #: 6



PURPOSE:

The purpose of this memo is to provide the Commission with a review of the draft 60% design of the Kyrene, Roosevelt, Farmer Bike/Ped Improvements Project which is proposing to connect the Western Canal Path at Kiwanis Park, to University Drive in downtown Tempe. The project's proposed improvements include protected and buffered bike lanes, 2-way cycle track, ADA directional ramps, upgraded crossings, ped signal on Baseline Rd, new sidewalks, wayfinding signage, landscape, and lighting.

RECOMMENDATION OR DIRECTION REQUESTED:

Information only.

CITY COUNCIL STRATEGIC PRIORITY:

- Performance Measure 3.26 - 20 Minute City
- Performance Measure 3.14/ 4.7 - ADA Transition Plan
- Performance Measure 1,08 - Vision Zero

BACKGROUND INFORMATION:

In June 2010, Tempe began to develop a preliminary design concept for the North/ South Rail Spur Multi-use path located along the Union Pacific Rail Road (UPRR) corridor from University Drive to Knox Road. In 2012 the City of Tempe received a Design Assistance Grant from the Maricopa Association of Governments to study the full corridor extents of the project (University Drive to Knox Road, an alignment originally selected by MAG). That process concluded with a Narrative Report entailing a preliminary design recommendation in January 2015. Following completion of the preliminary design, the City then applied for CMAQ funds to complete design and construction of the project. A design team was hired in 2017 to develop and design construction documents for a buildable project that strives to provide a safe and low-stress north/south bicycle facility that spans the city limits. The 2015 Transportation Master Plan supports the implementation of this project including identifying the pathway in the Recommended Bicycle Pedestrian Improvements 2040 map and project list.

Two public meetings were held on October 3rd and 13th, 2018 to introduce the project, present the 30% design drawings, and collect public feedback on the project direction.

Due to UPRR ROW constraints, cultural resource testing, and estimated additional costs totaling 3+ million, the original alignment had to be changed to not utilize the rail corridor. The new alternative alignment was approved by Council in 2019 and approved by MAG in 2021. On Wednesday, April 19th 2023, there were two public meetings held at to solicit feedback from the public on the draft 30% designs for the updated alignment (one virtual meeting and a second in-person meeting held at Childsplay Theatre Company Rehearsal Hall, 900 S. Mitchell Drive). Staff worked with the consultant to integrate comments from the public into the draft 60% design plans, which were completed in July of 2023. A second round of public meetings will be held September 20th to review the draft 60% designs. The details for the meetings are as follows:

- Wednesday, September 20, noon, Virtually via Zoom
www.tempe.gov/handlebars
- Wednesday, September 20, 6-7 p.m. In Person
Childsplay Theatre Company Rehearsal Hall, 900 S. Mitchell Drive

It is anticipated that the final design will be completed summer 2024, with construction beginning early 2025.

FISCAL IMPACT or IMPACT TO CURRENT RESOURCES:

Design:

\$293,888 Transit Tax (Preliminary Design)

\$578,714 Transit Tax (Final Design)

Construction:

\$2,315,065 Congestion Mitigation and Air Quality Improvement Grant

\$235,738 Local Match (Transit Tax)

\$35,754 Development Impact Fees

ATTACHMENTS:

PowerPoint

Kyrene, Roosevelt, Farmer Bike/Ped Improvements Project

**Transportation Commission
September 12, 2023**



Proposed Improvements

- Protected and Buffered Bike Lanes
- 2-way Cycle Track
- ADA Directional Ramps
- New Pedestrian Signals
- New Sidewalk
- Wayfinding Signage
- Landscape
- Lighting



Public Feedback



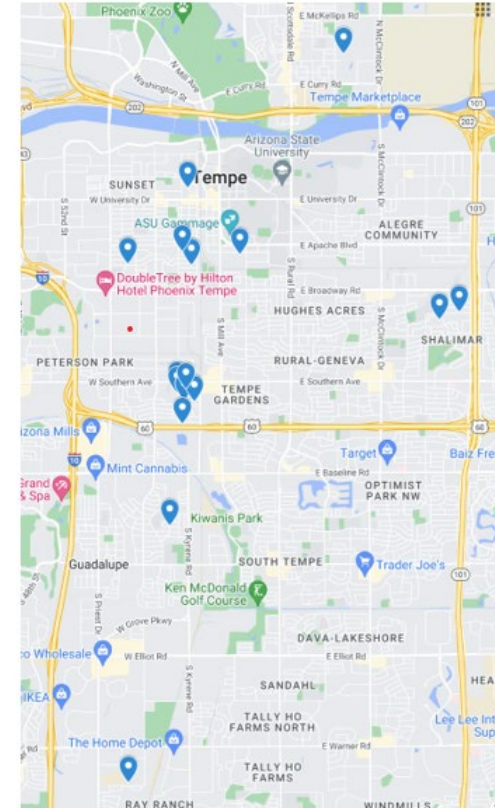
Meeting Held April 19, 2023, public comments taken from April 19th to May 2nd, 2023

13 in-person attendees, 31 online survey Respondents

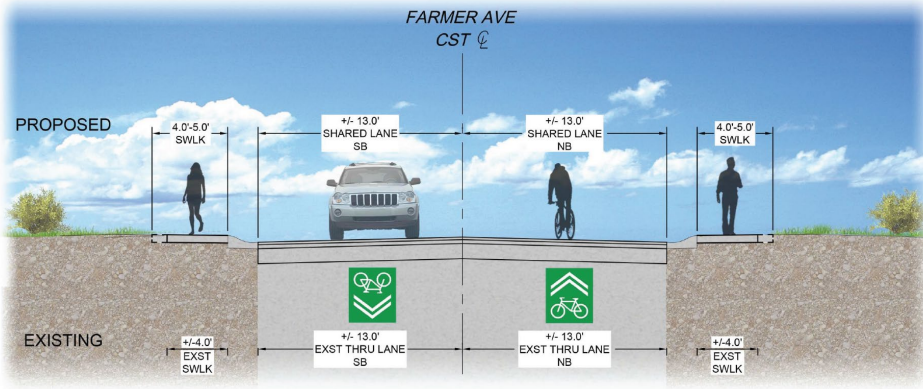
Themes:

- More Signage for vehicles and Hi-visibility paint
- More Physical Barriers between bicyclists and vehicles
- Vertical Delineators with Physical Buffers
- Baseline North Side - Western Canal Connection
- Sharrows continue to Hardy on Roosevelt/ Dwight Park

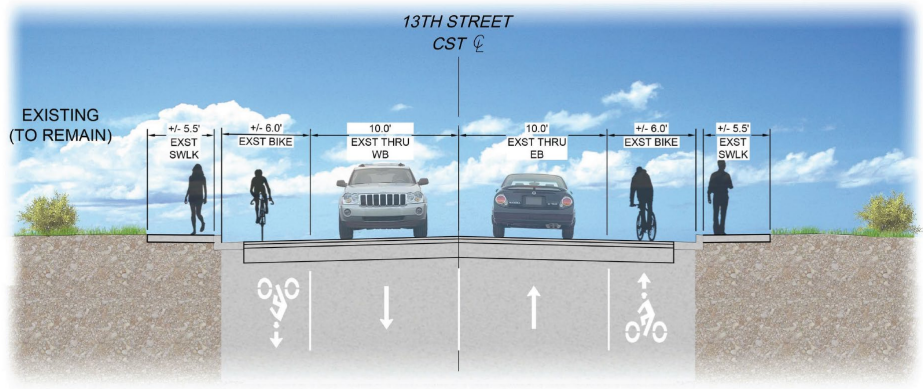
18 respondents provided an address in Tempe.



Farmer Ave and 13th St.



SEGMENT D - FARMER AVE (13TH ST - UNIVERSITY DR)

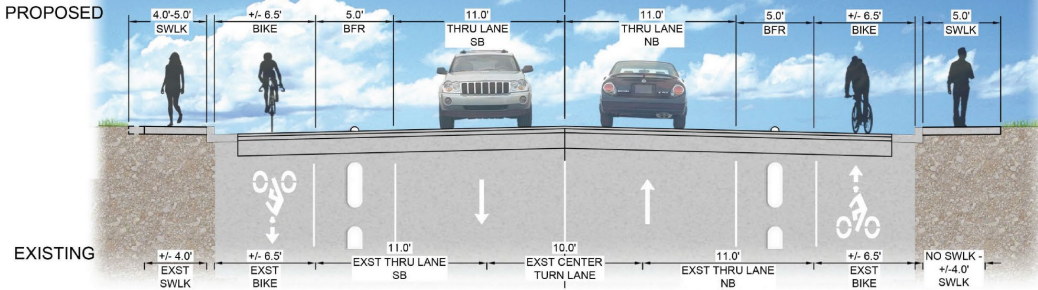


SEGMENT D - 13TH STREET (ROOSEVELT ST - FARMER AVE)

Roosevelt (13th to Broadway)



Roosevelt Street
Broadway Rd - 13th St
CST @

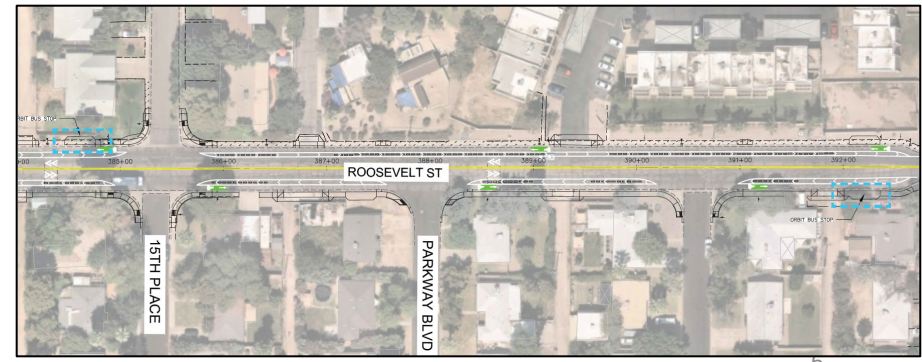
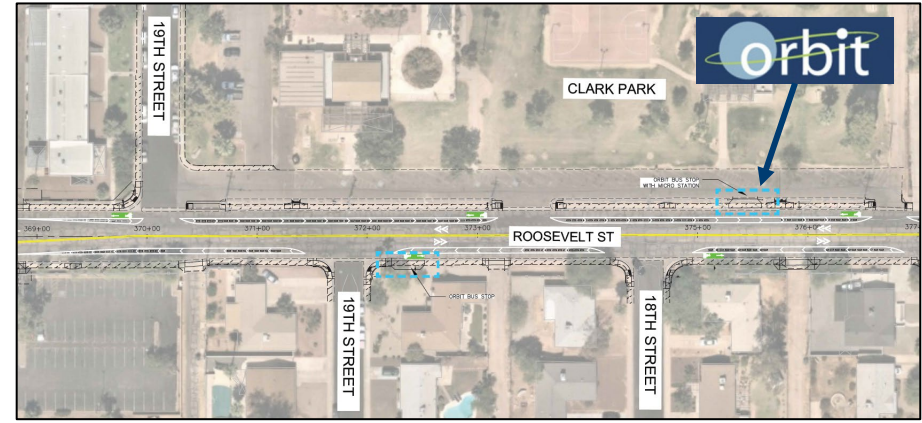
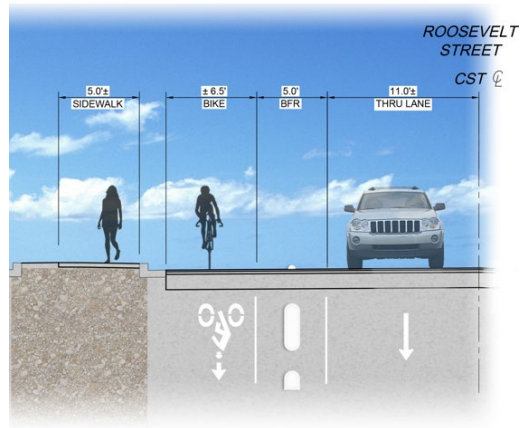
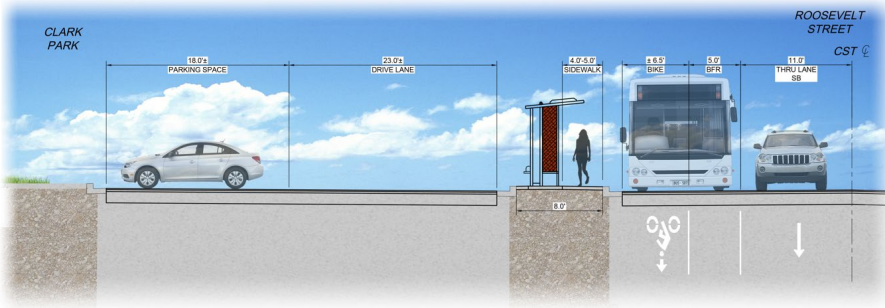


SEGMENT D - ROOSEVELT ST (BROADWAY RD - 13TH ST)

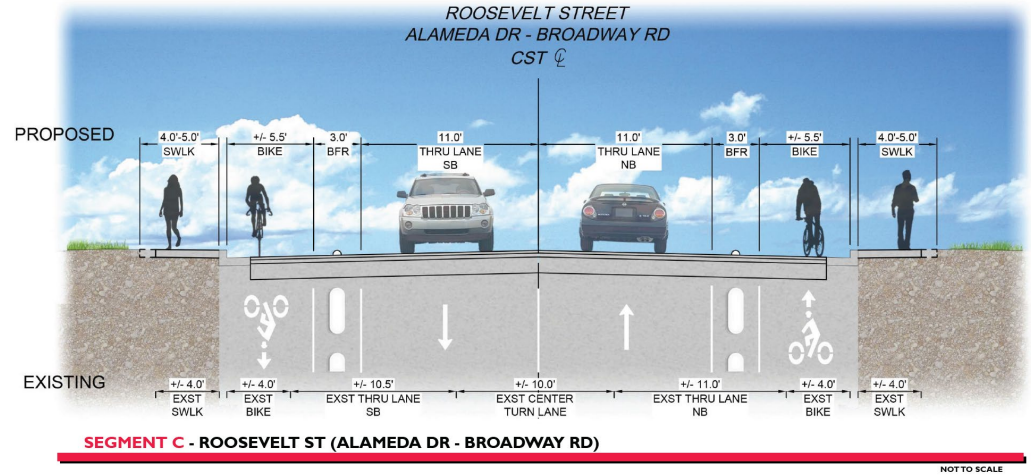
NOT TO SCALE



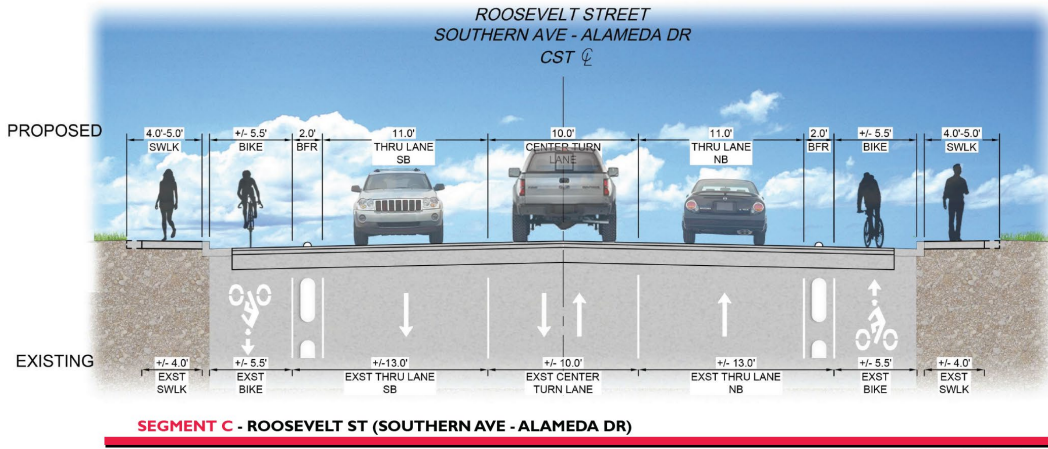
Roosevelt St. Orbit Locations



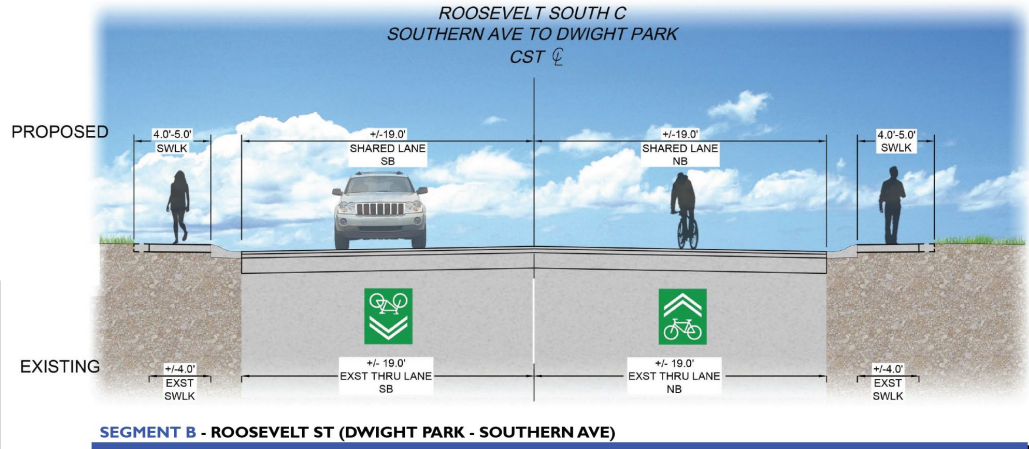
Roosevelt St (Broadway to Alameda)



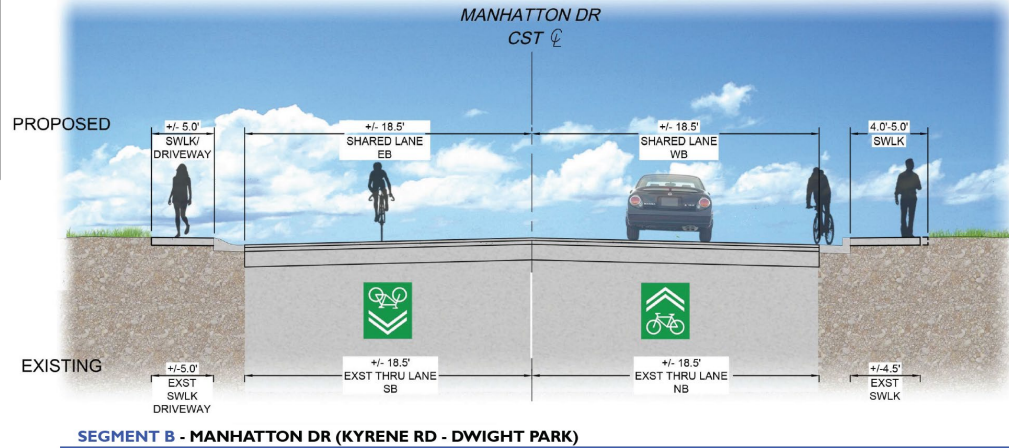
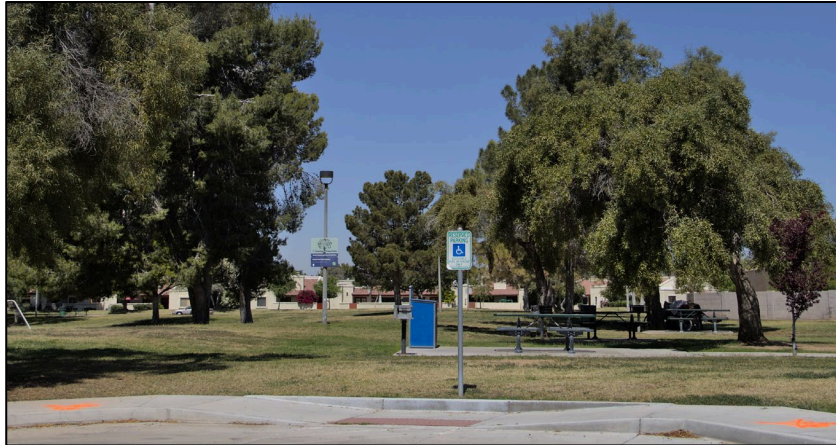
Roosevelt St (Alameda to Southern)



Dwight Park Connection



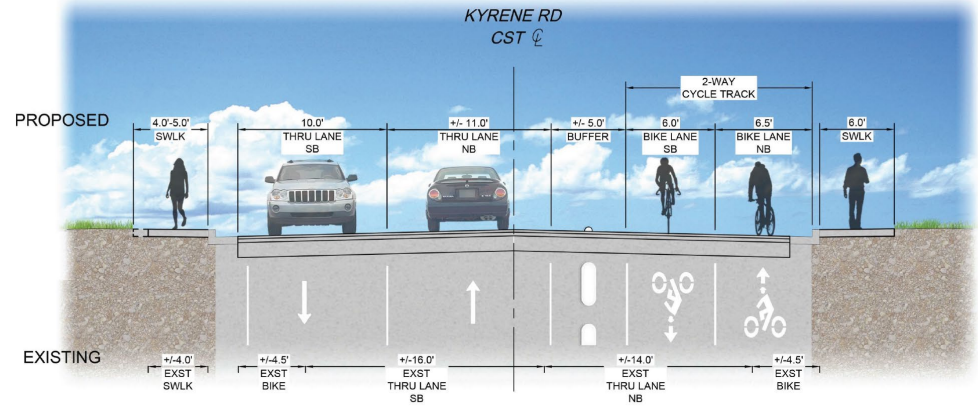
Dwight Park Connection



Kyrene Cycle Track

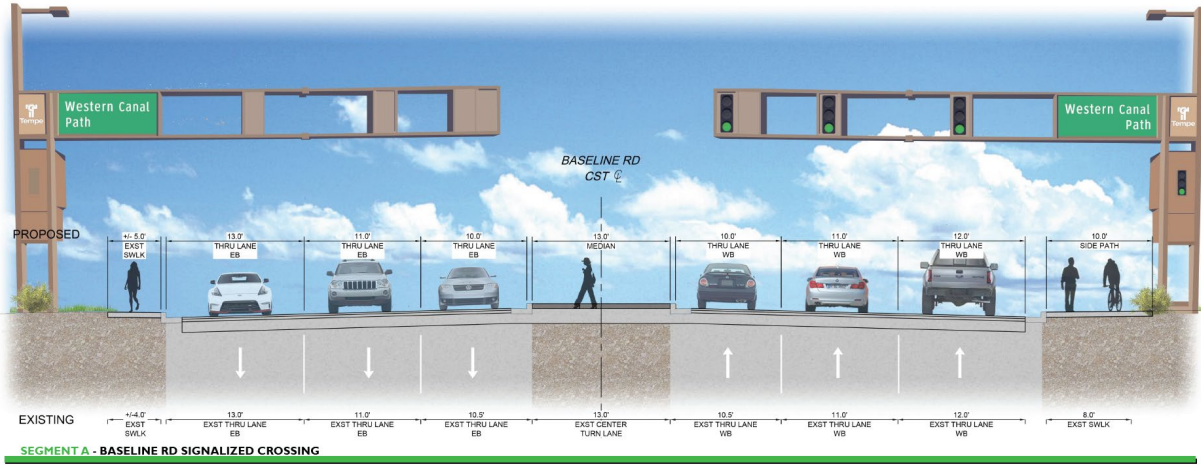


- Protected, Two-way Cycle Track on Kyrene Rd to Manhattan Dr
- Raised Channelization Device within 5' buffer
- Signalized Crossing



SEGMENT A - KYRENE RD (BASELINE RD - MANHATTAN DR)

Baseline Pedestrian Signal



Next Steps

Upcoming Public Meetings:

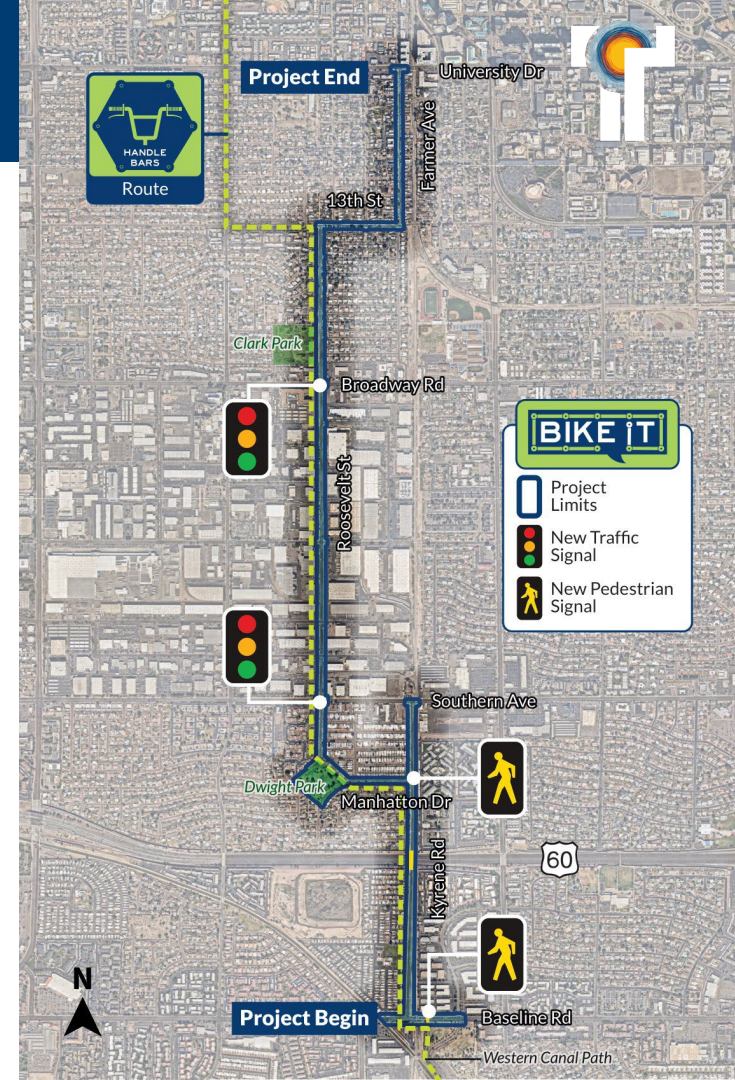
- Wednesday, Sept. 20 | 12pm Zoom meeting
- Wednesday, Sept. 20 | 6-7 p.m.
Childsplay Theatre Company Rehearsal Hall
900 S. Mitchell Drive

Proposed Design Schedule:

- 60% Design: January 2024
- 100% Design: September 2024
- Project Obligation: November 2024

Estimated Construction schedule:

- Bid Advertisement: January 2025
- Contract approval: March 2025
- Notice to proceed: April 2025
- End construction: March 2026



MEMORANDUM

TO: Tempe Transportation Commission
FROM: Isaac Chavira, Interim Deputy Engineering & Transportation Director
DATE: September 12, 2023
SUBJECT: Future Agenda Items
ITEM #: 8



PURPOSE:

The Chair will request future agenda items from the Commission members.

RECOMMENDATION OR DIRECTION REQUESTED:

This item is for information only.

- October 10
 1. Annual Report
 2. Eight Street Bike Ped Project
 3. CIP Updates
- November 14
 1. Annual Report
 2. Roundabouts – data on existing and future plans
 3. Western Canal (48th Street to I-10)
 4. Commission Business
- December 12
- January 9
 1. Commission Business
 2. Scooter Corrals in Downtown
 3. All Pedestrian Phase Signal Mill Avenue and Fifth Street
 4. Alameda Drive Streetscape Project (before and after)
- February 13
 1. CIP Updates
 2. Prop 400 E
 3. Traffic Bureau Update
 4. Available public and ADA parking spaces in downtown
- March 12
 1. Crime Prevention Through Environmental Design (CPTED)
 2. TMA/TDM, Personal Delivery Devices
 3. College and University Underpass Project
- April 9
 1. Bike Hero
- May 14
- June 11
 1. CIP Updates
 2. Transportation Master Plan & Transportation Equity
- July 9